

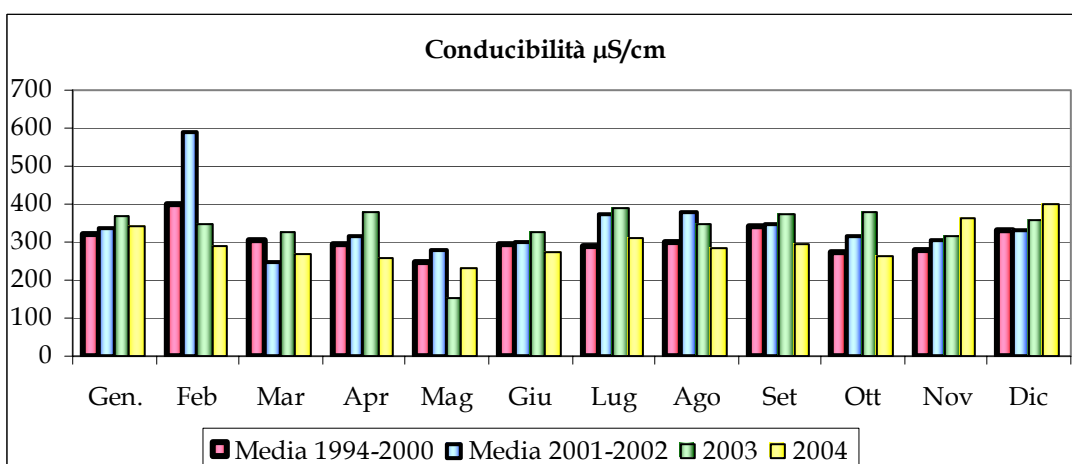
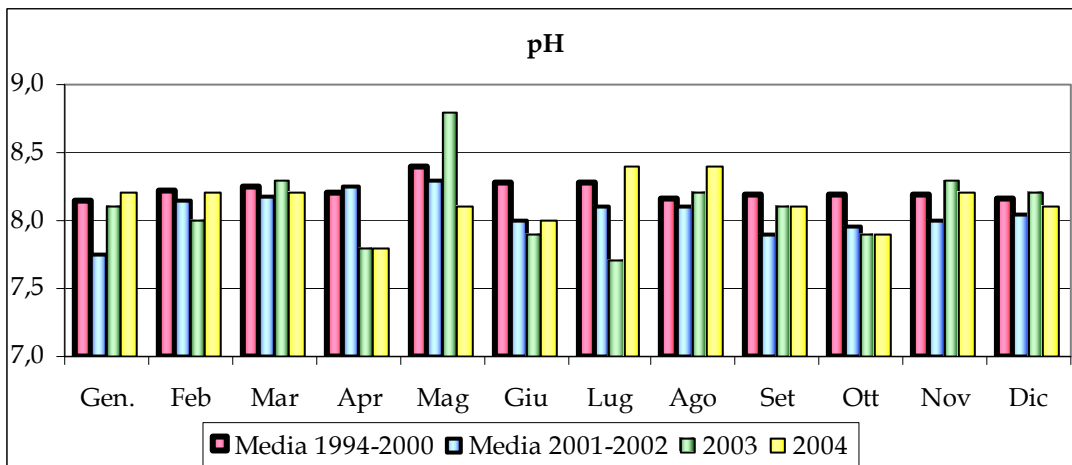
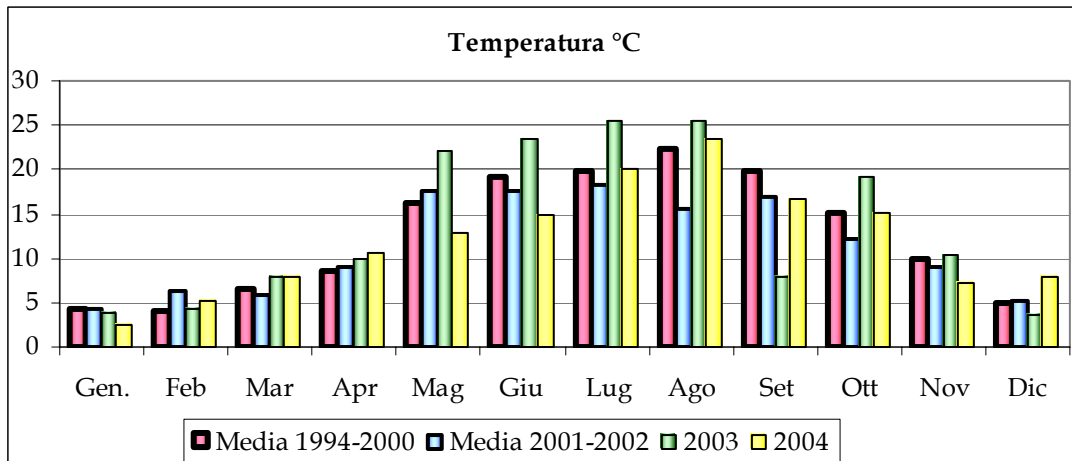
## **Allegato 3**

**Andamenti mensili dei principali  
parametri chimico-fisico-microbiologici  
per singola stazione di monitoraggio  
fiumi Panaro e Secchia  
anni 1994-2004**



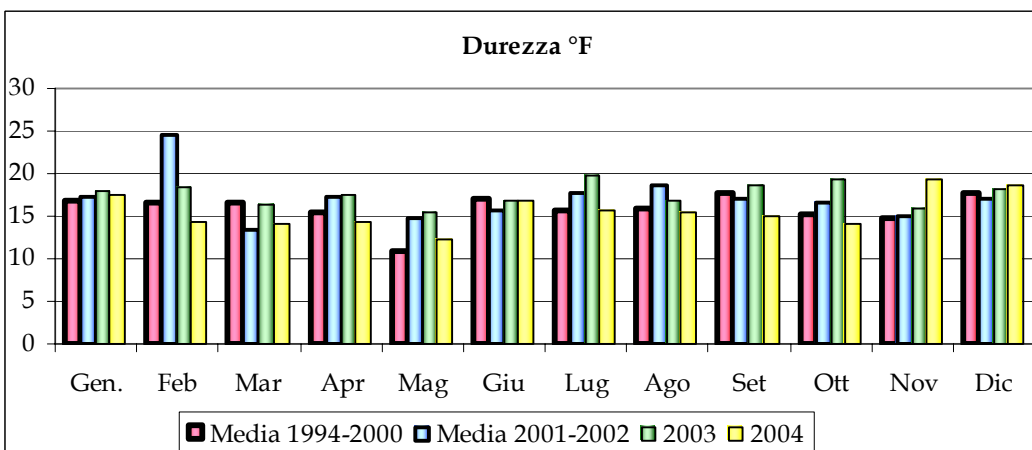
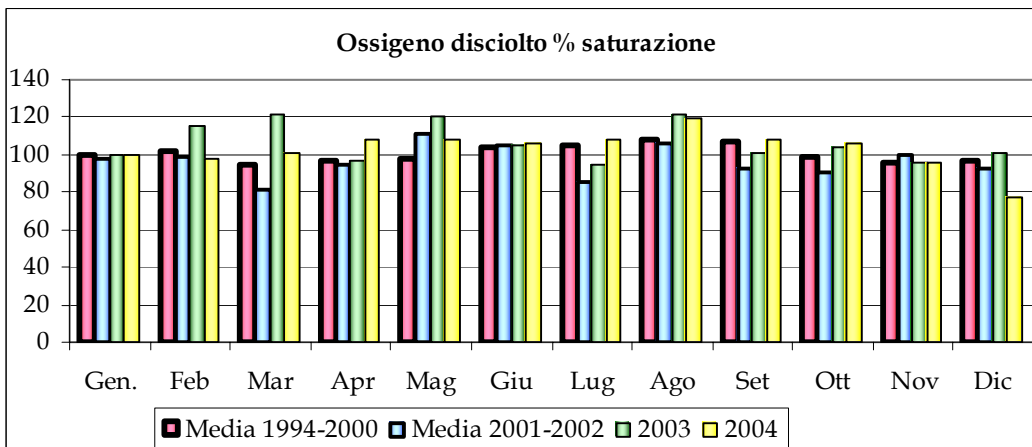
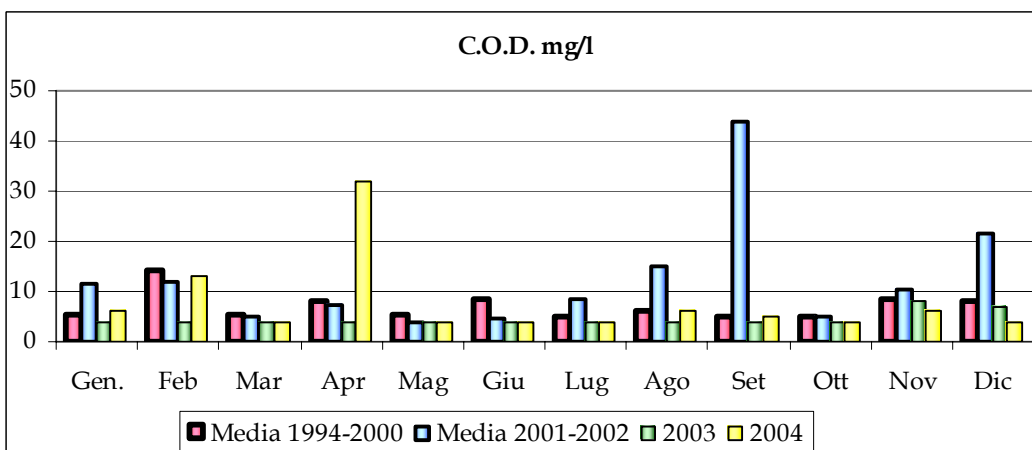
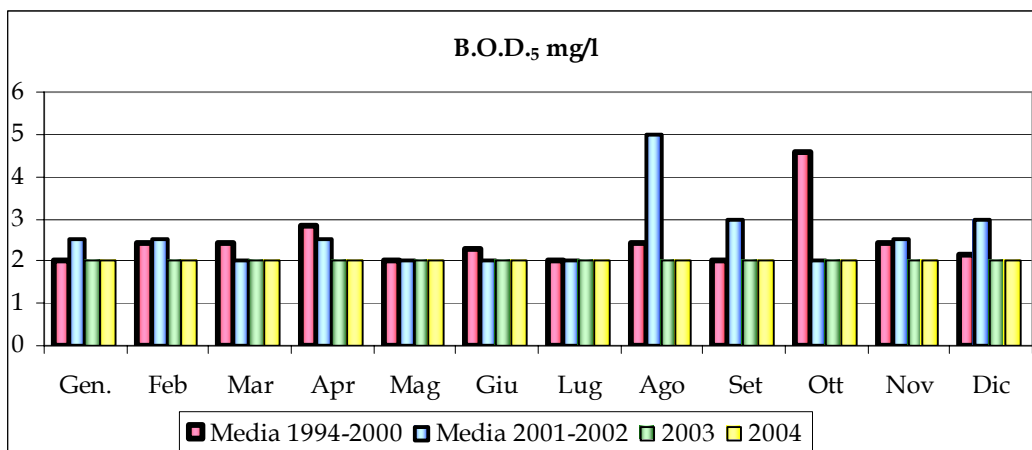
## Fiume Panaro

### Ponte di Marano - stazione 4



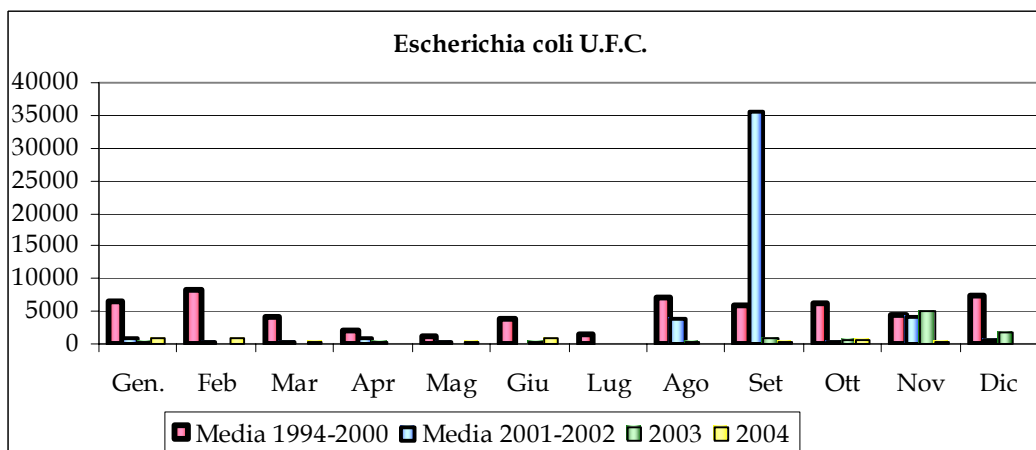
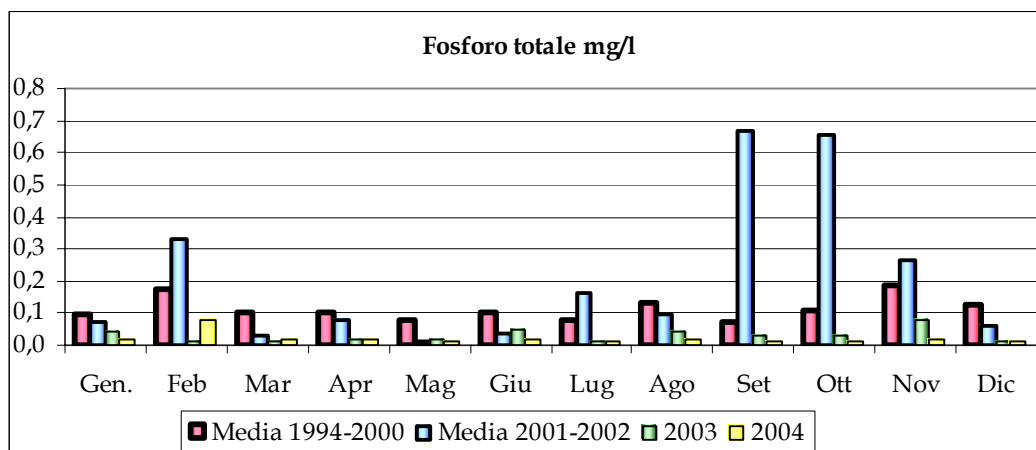
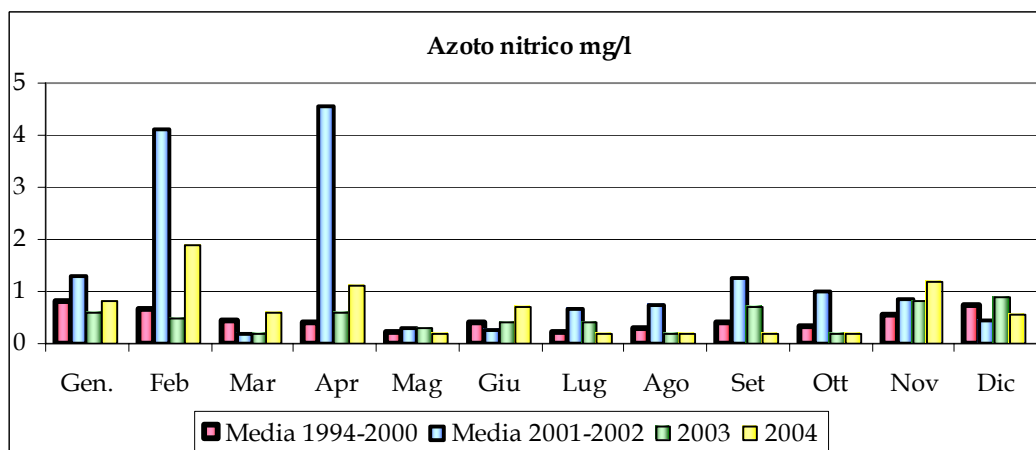
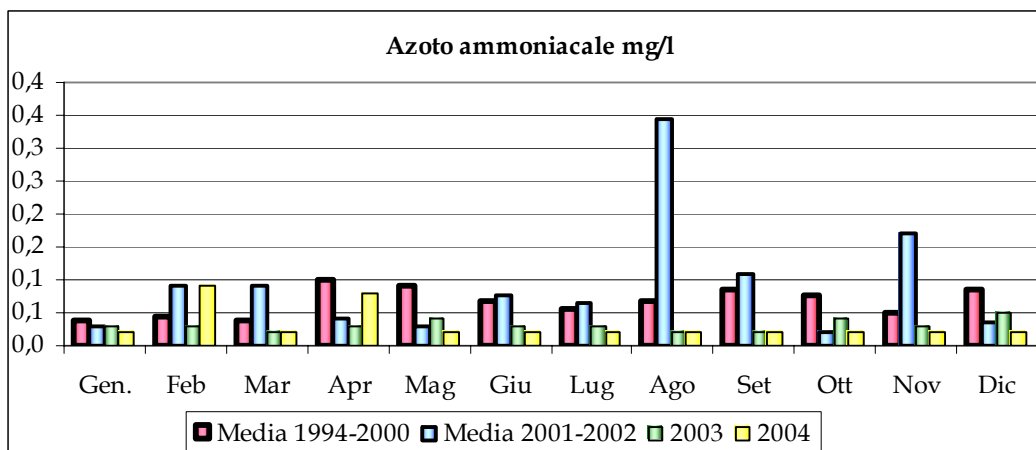
## Fiume Panaro

### Ponte di Marano - stazione 4

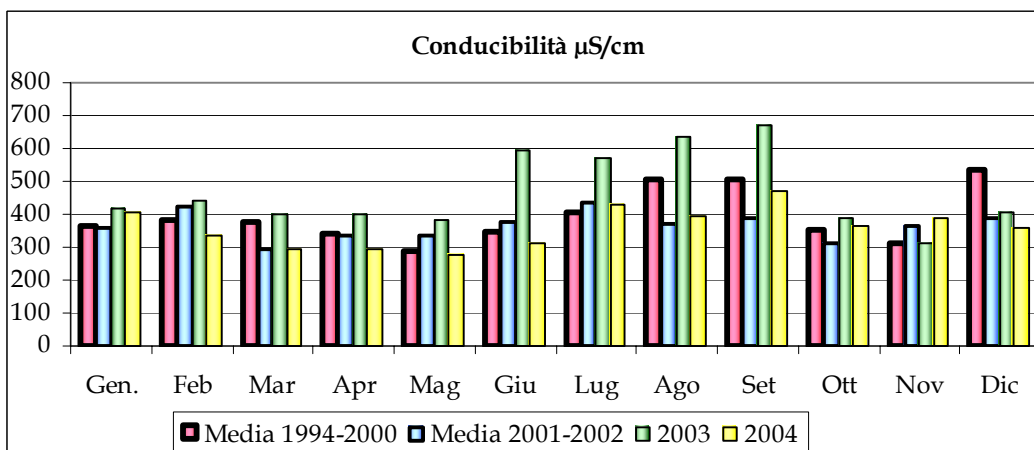
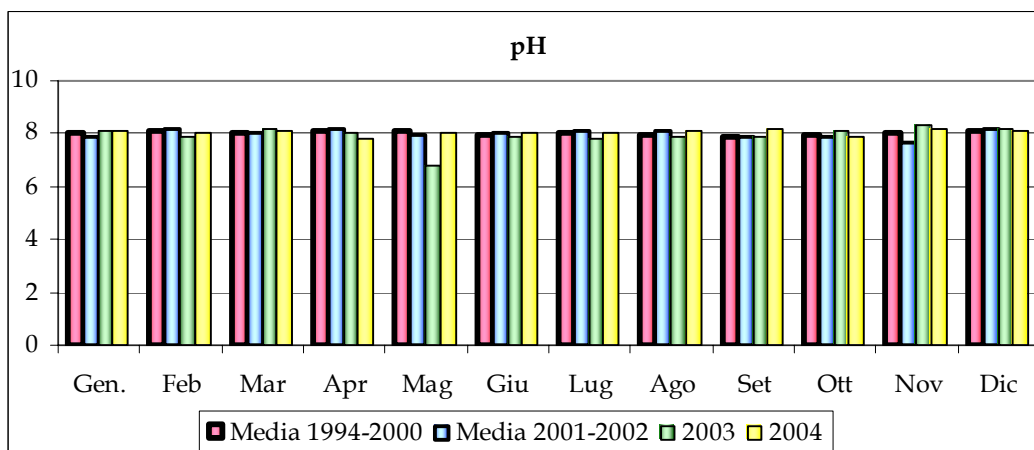
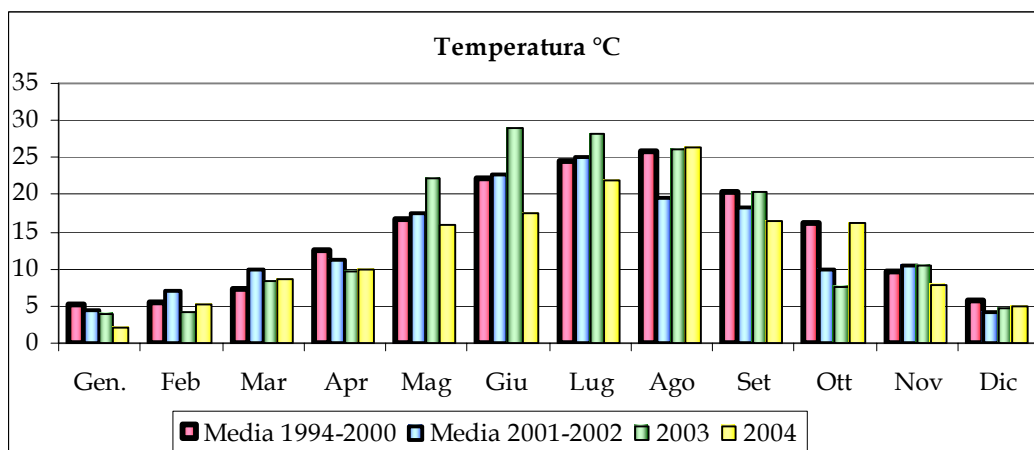
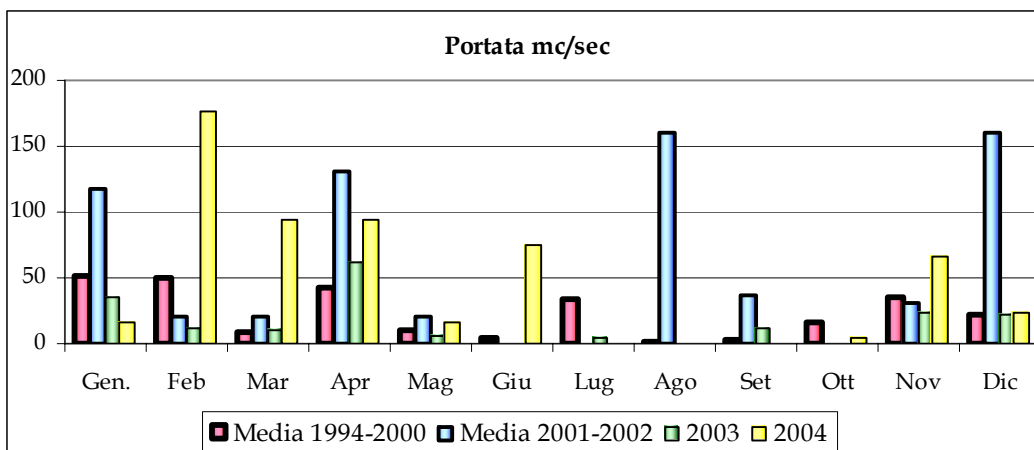


## Fiume Panaro

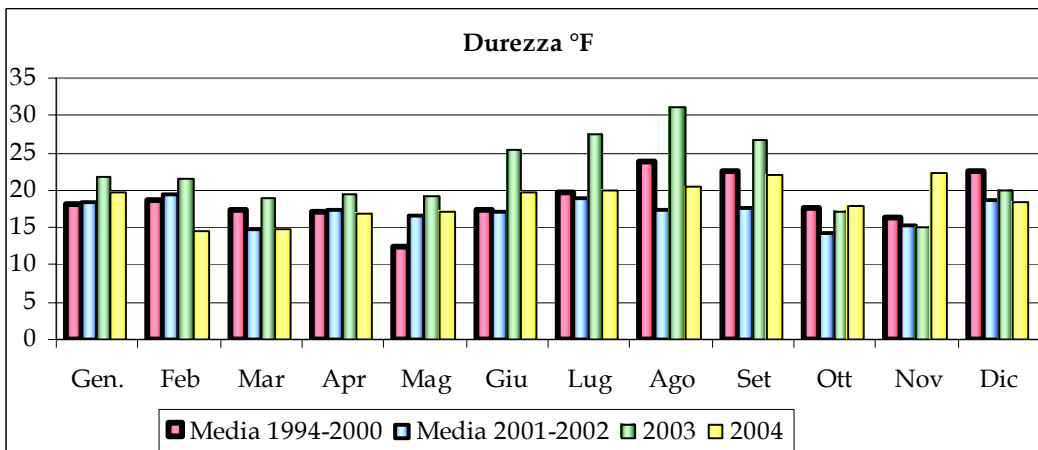
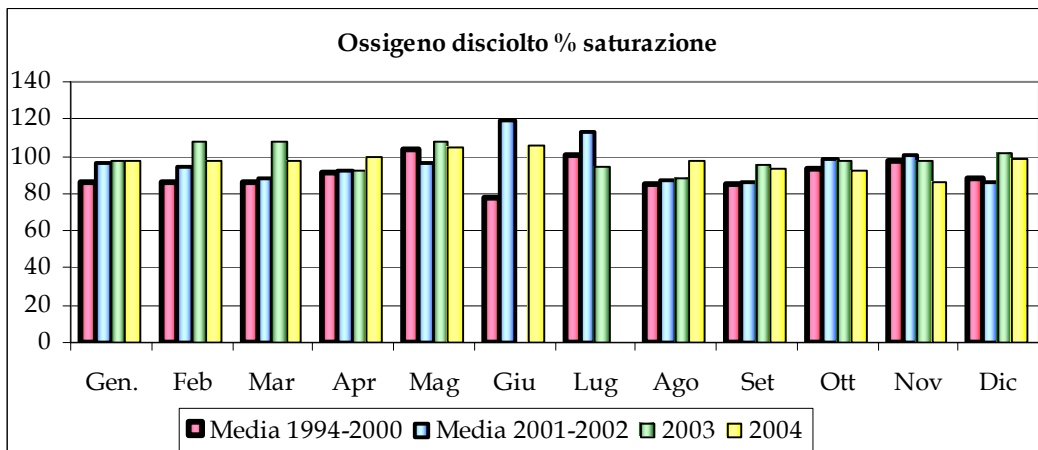
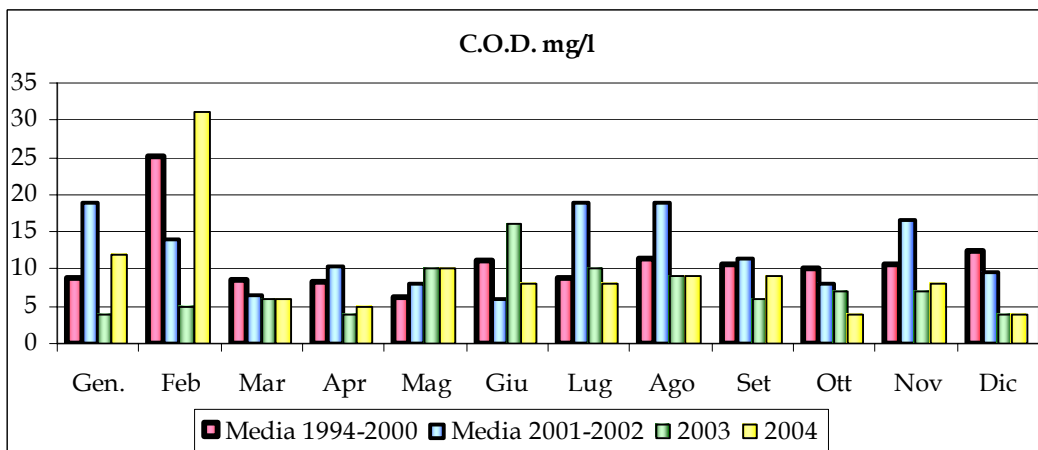
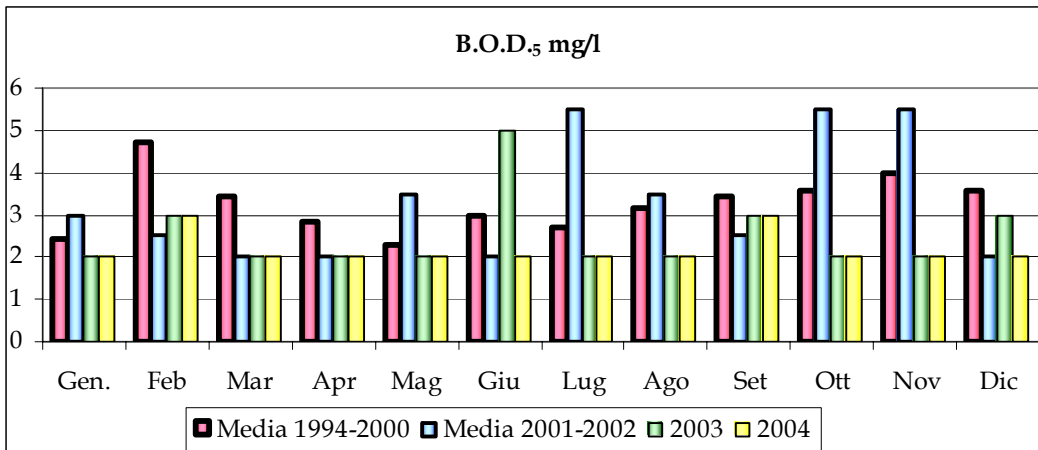
### Ponte di Marano - stazione 4



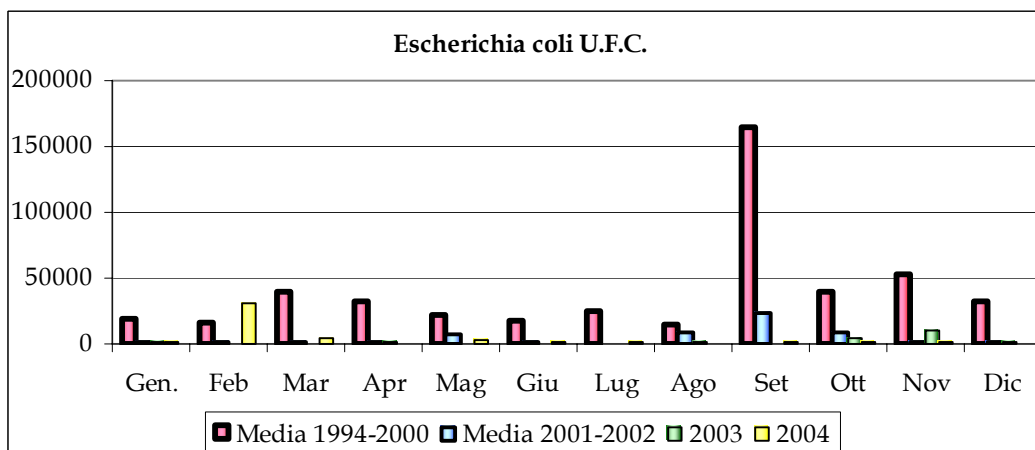
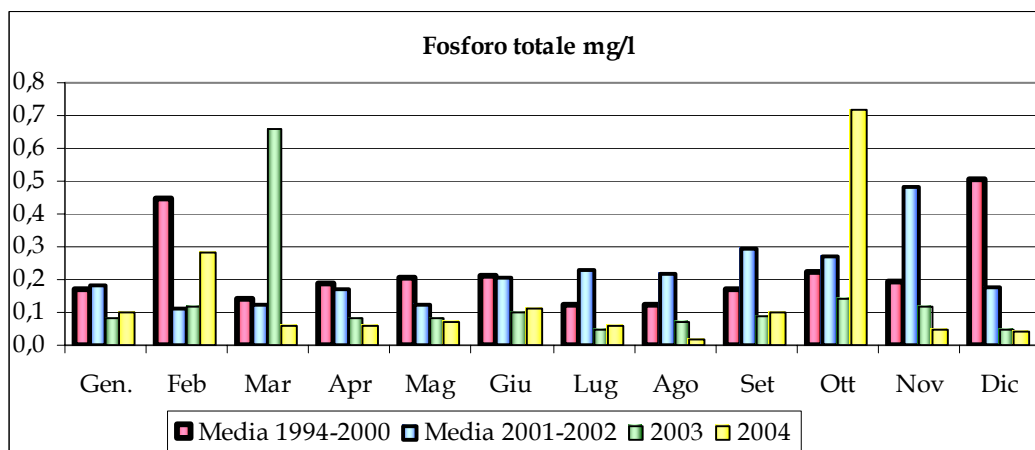
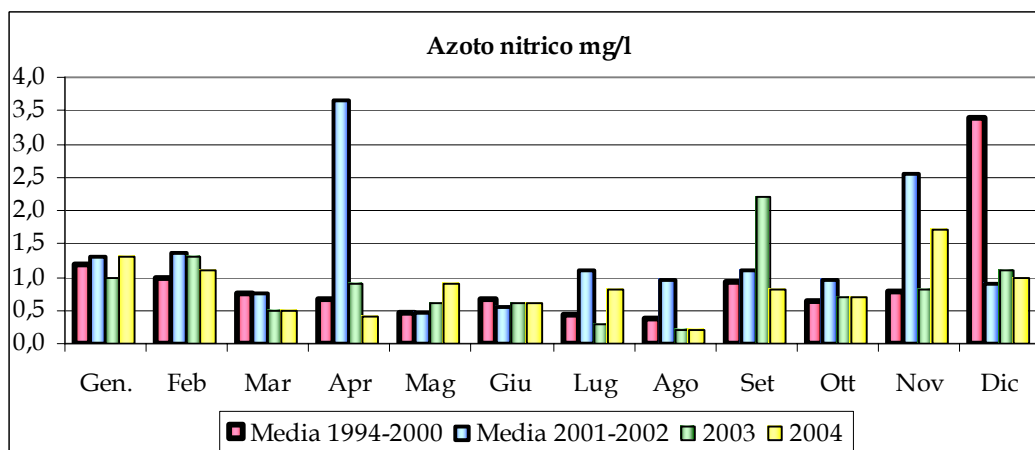
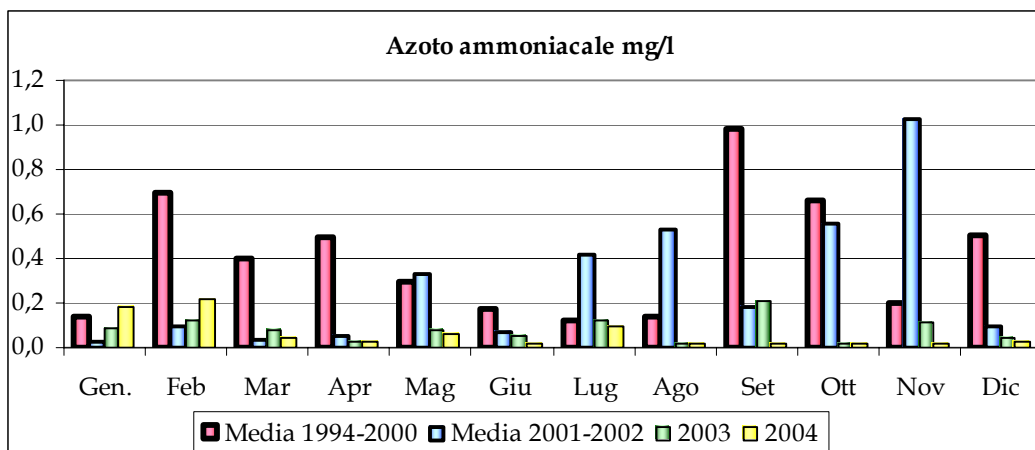
**Fiume Panaro**  
Ponticello S. Ambrogio – stazione 6



**Fiume Panaro**  
Ponticello S. Ambrogio - stazione 6



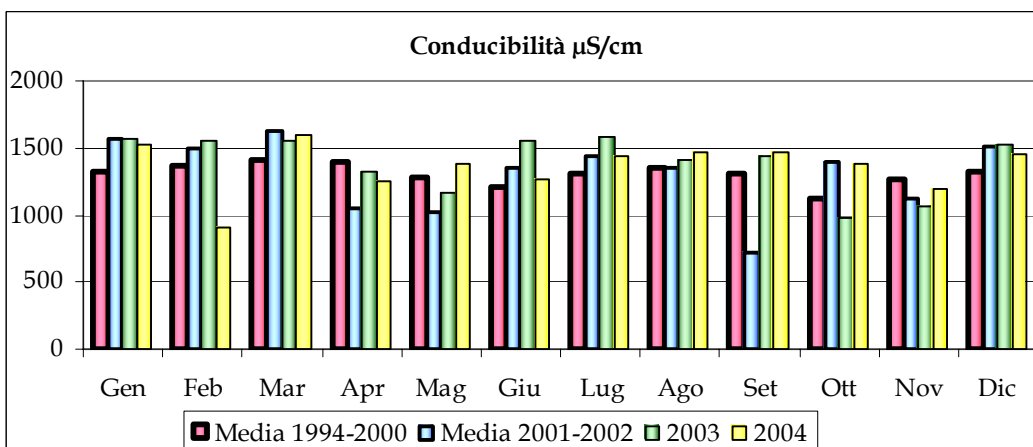
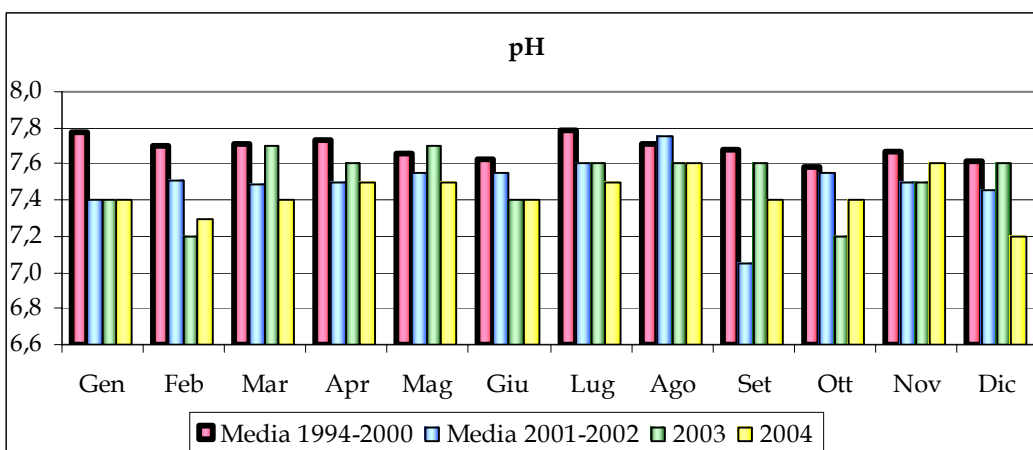
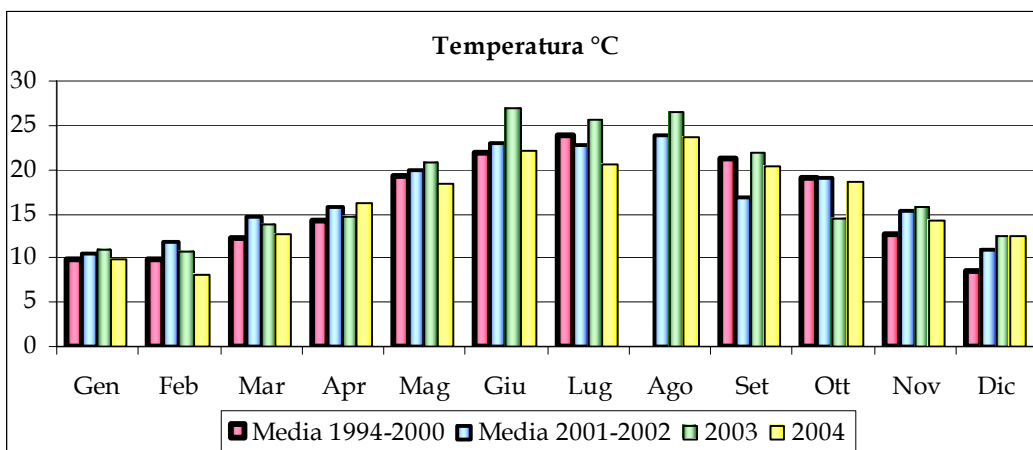
**Fiume Panaro**  
Ponticello S. Ambrogio – stazione 6





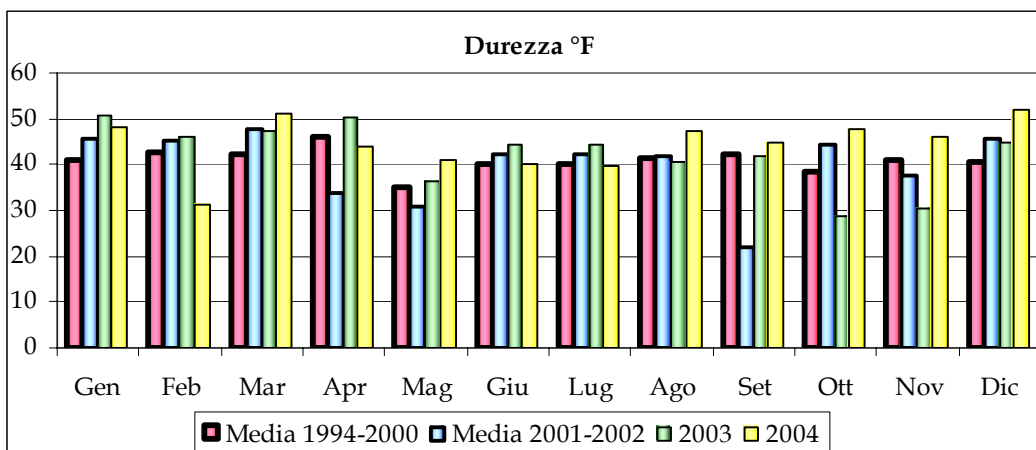
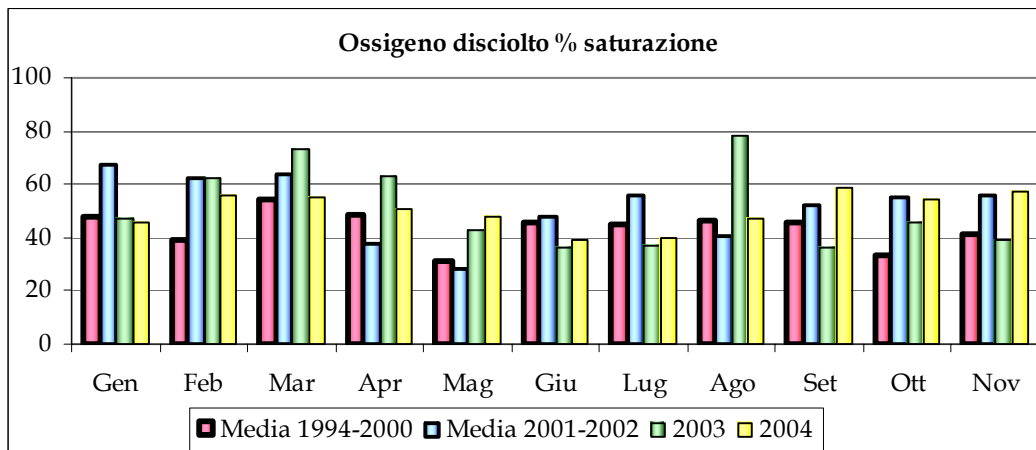
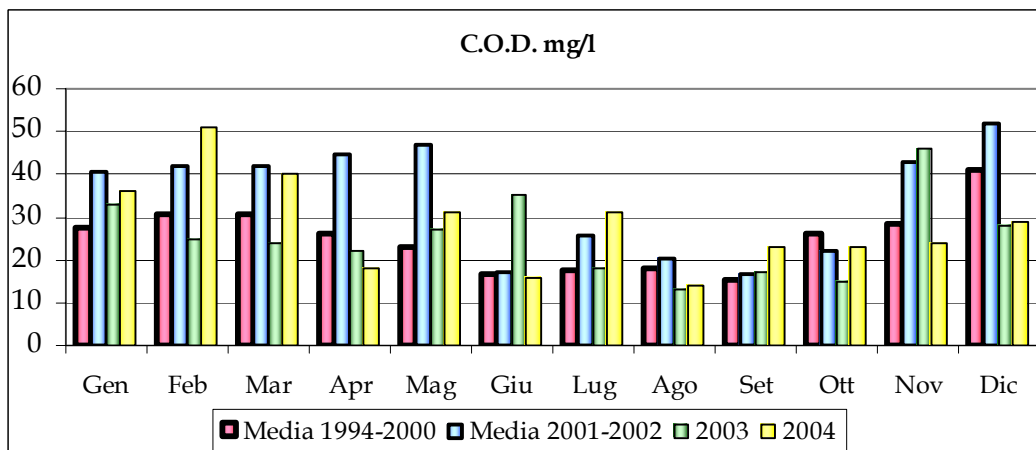
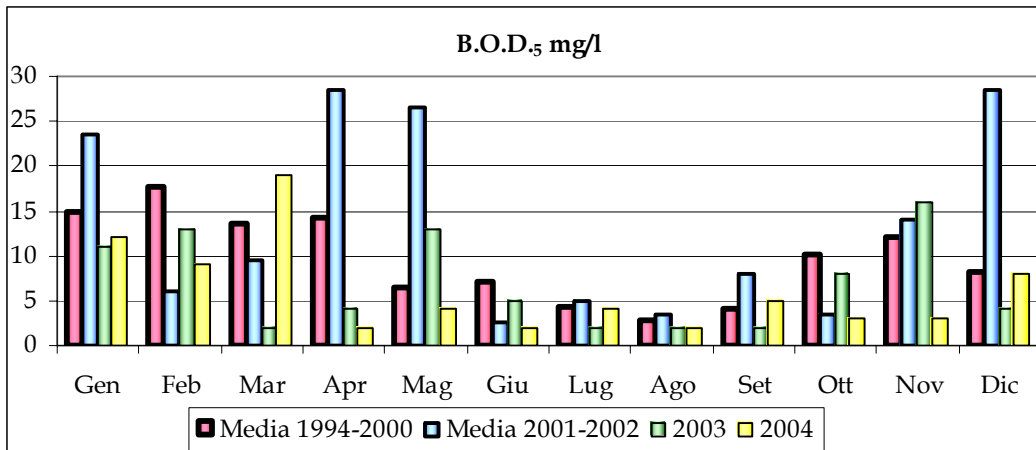
## Fiume Panaro

### Canale Naviglio - stazione 7



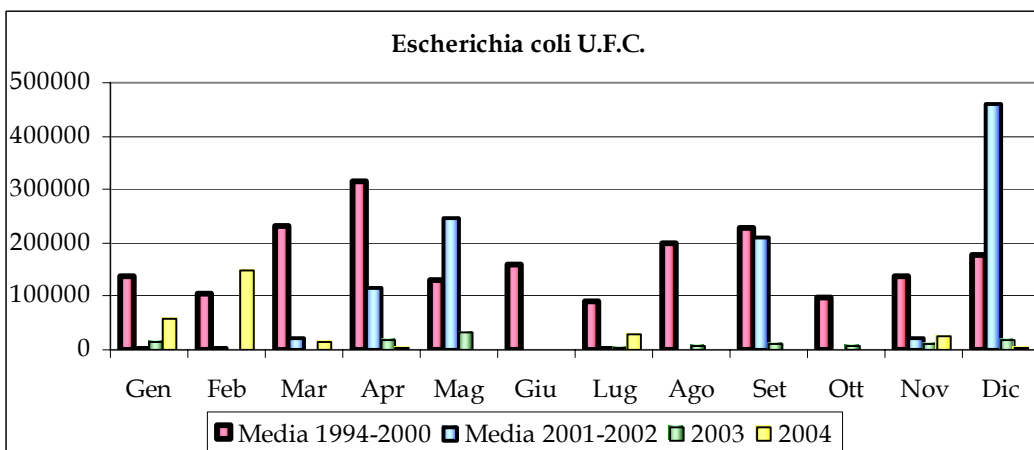
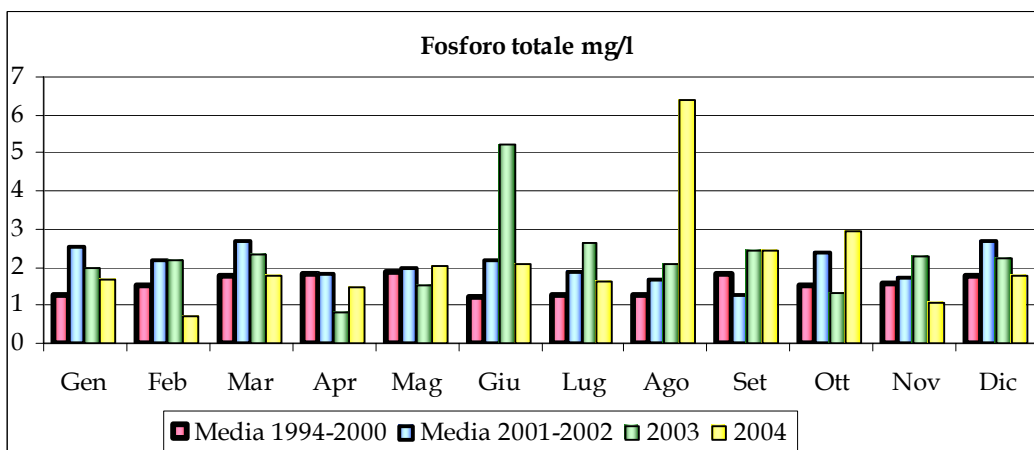
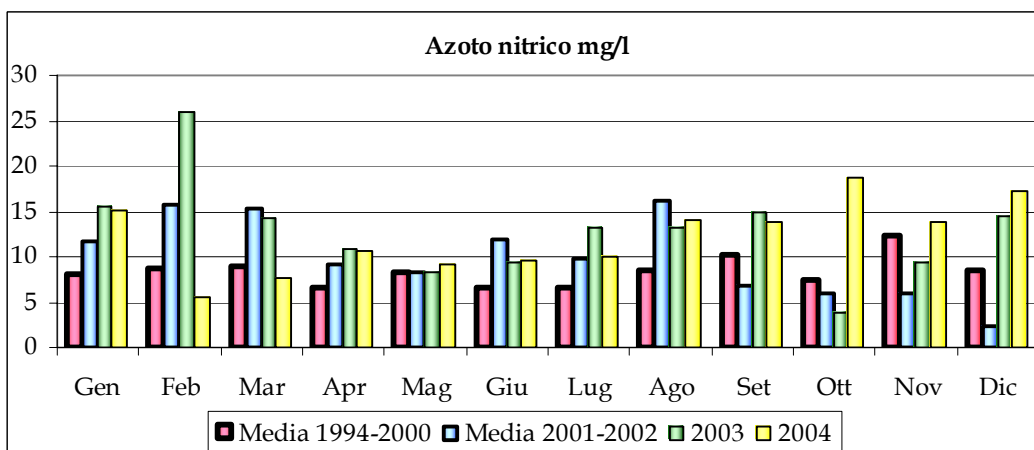
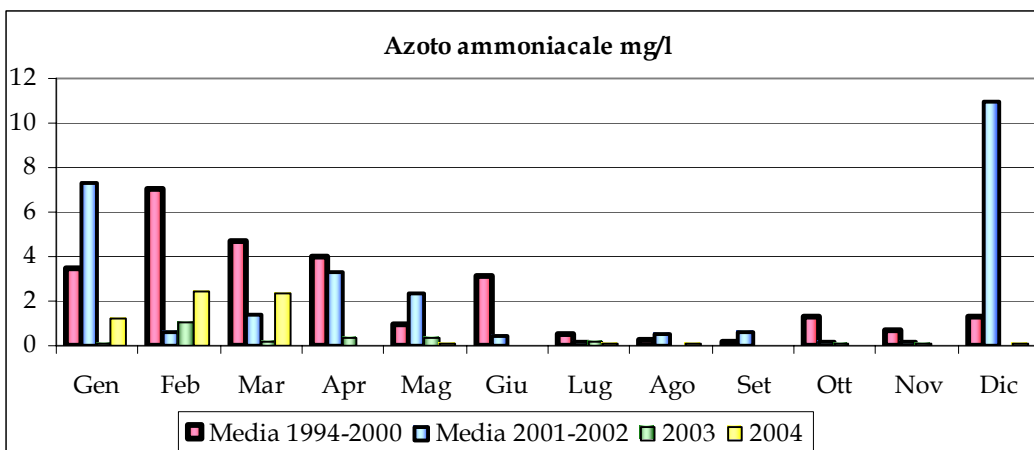
## Fiume Panaro

### Canale Naviglio - stazione 7

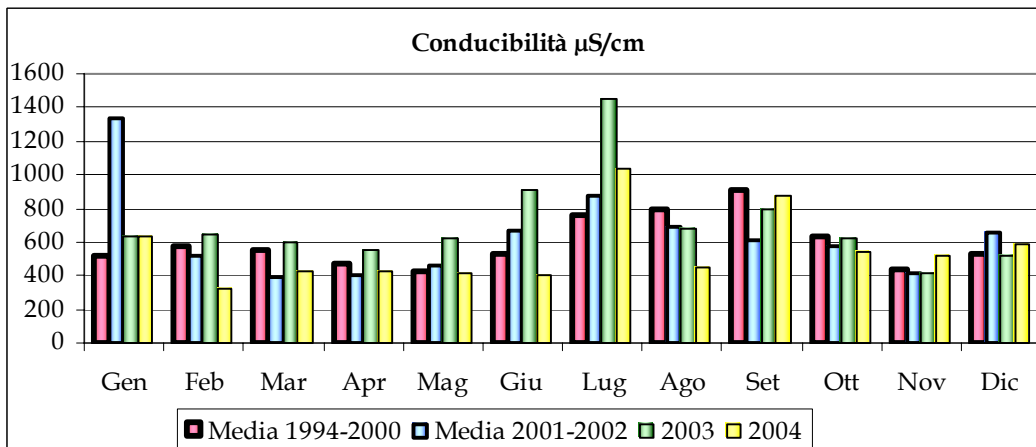
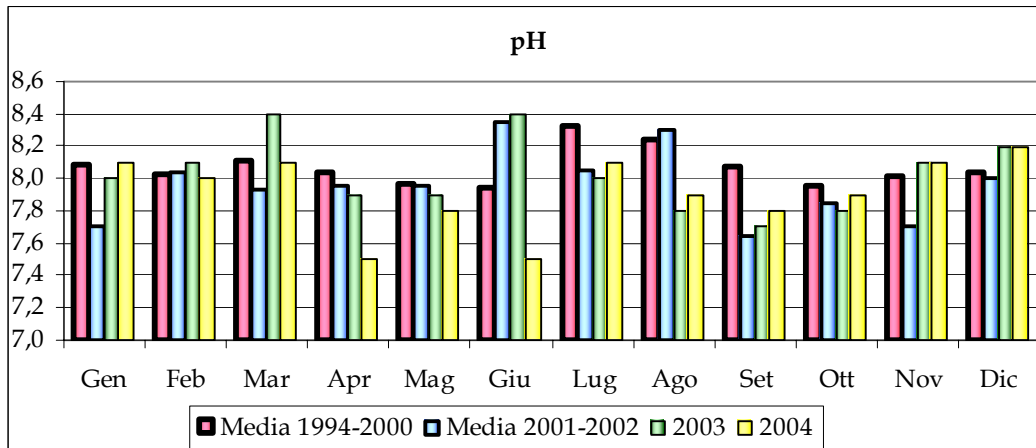
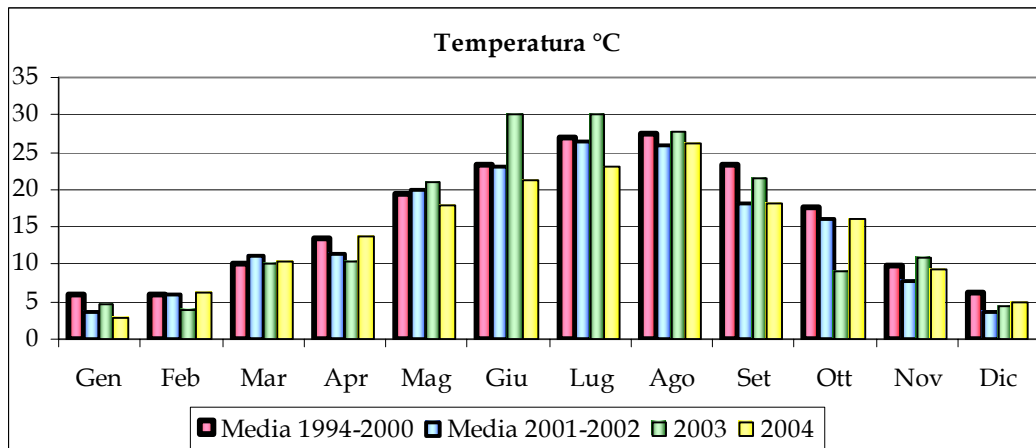
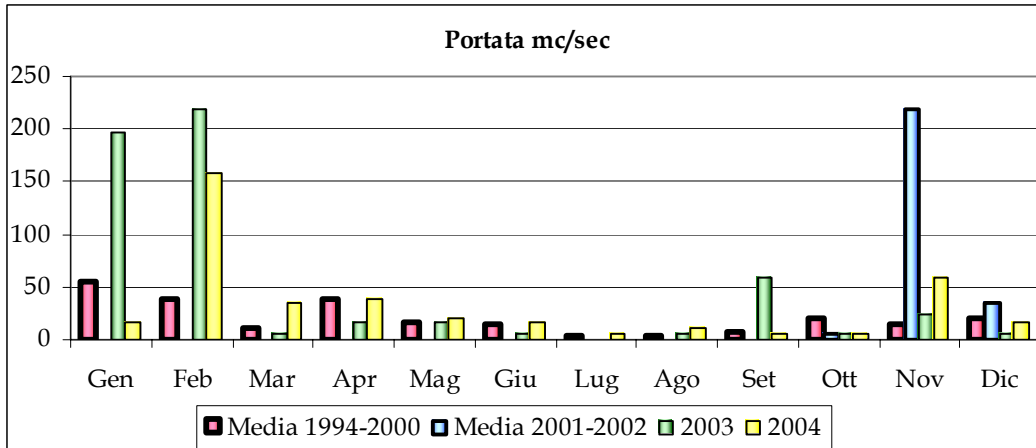


## Fiume Panaro

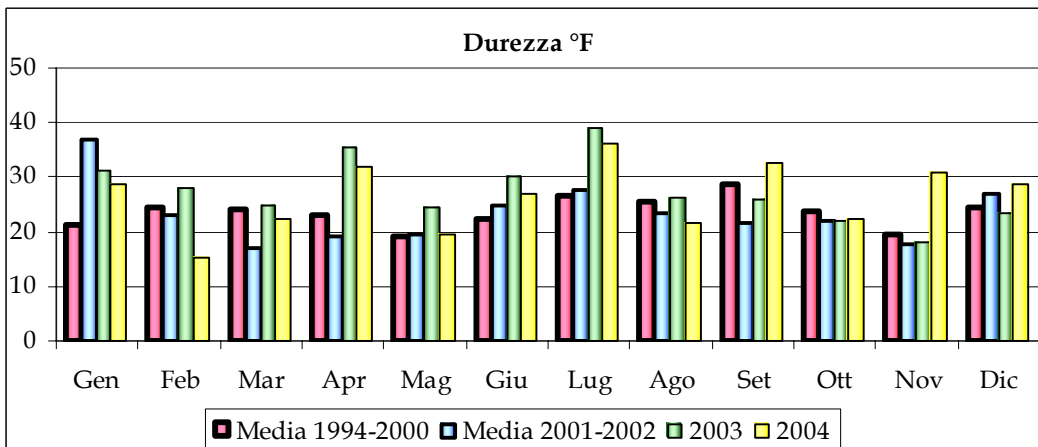
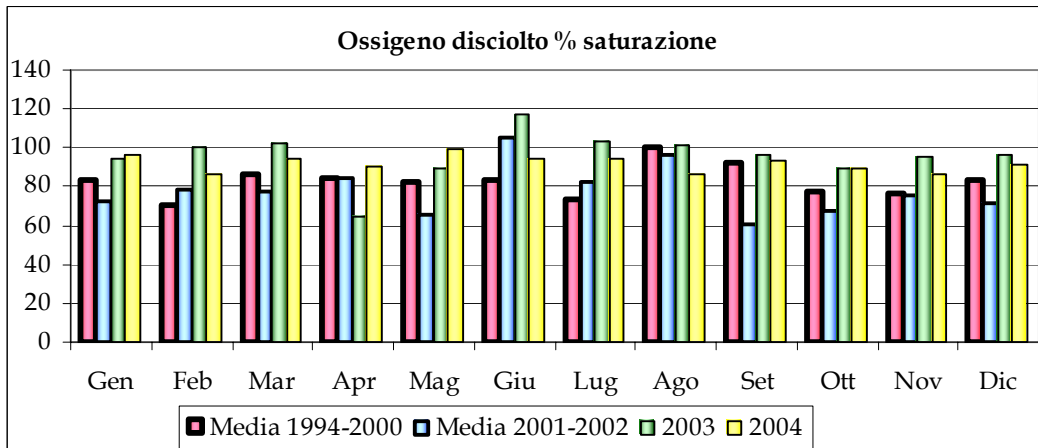
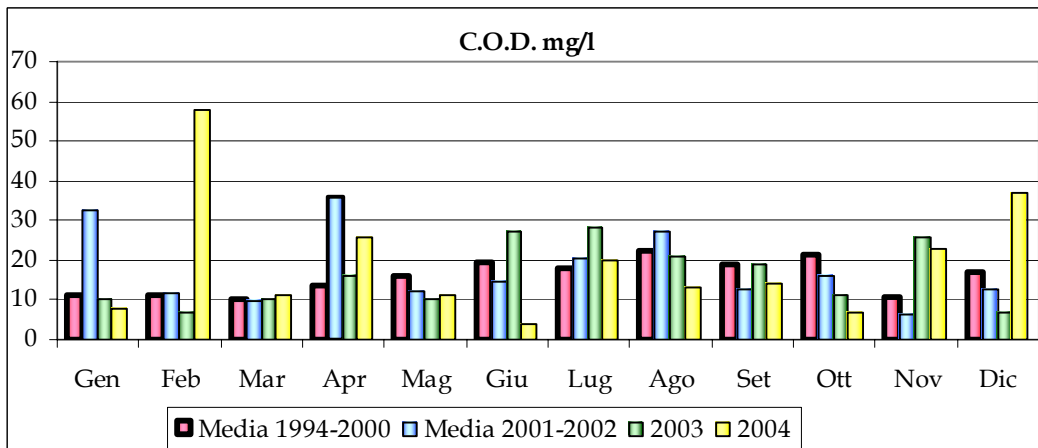
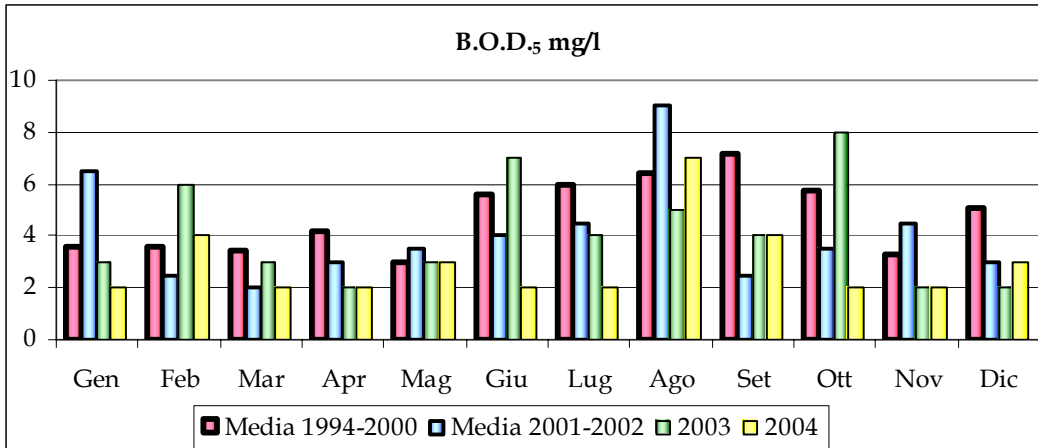
### Canale Naviglio - stazione 7



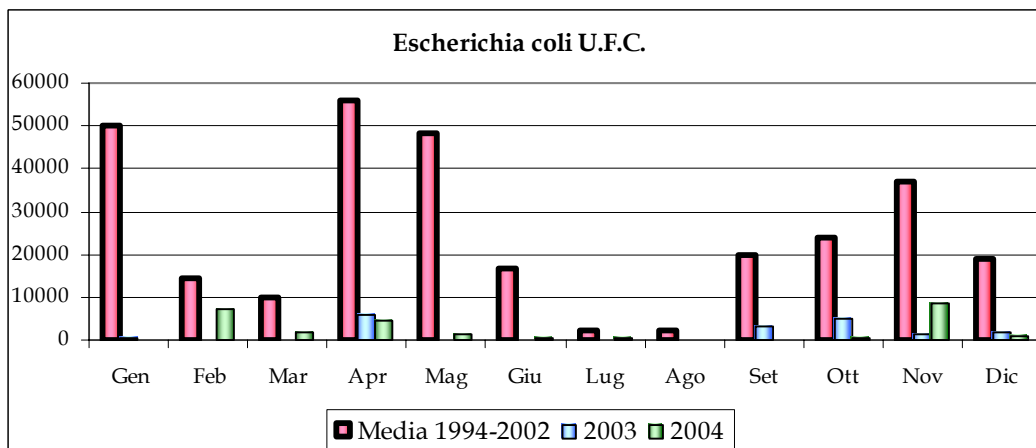
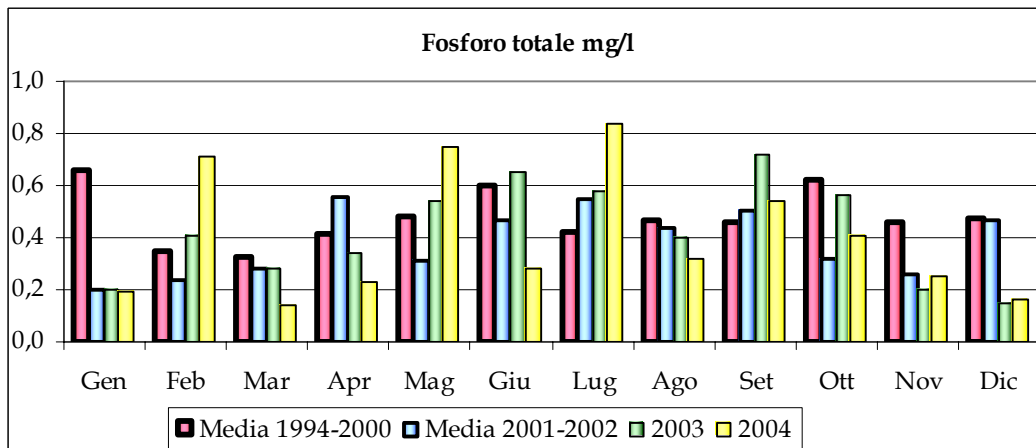
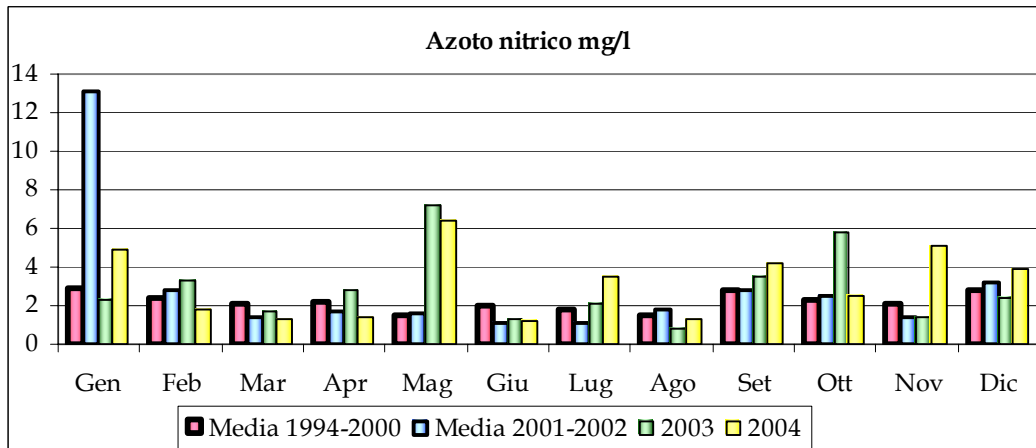
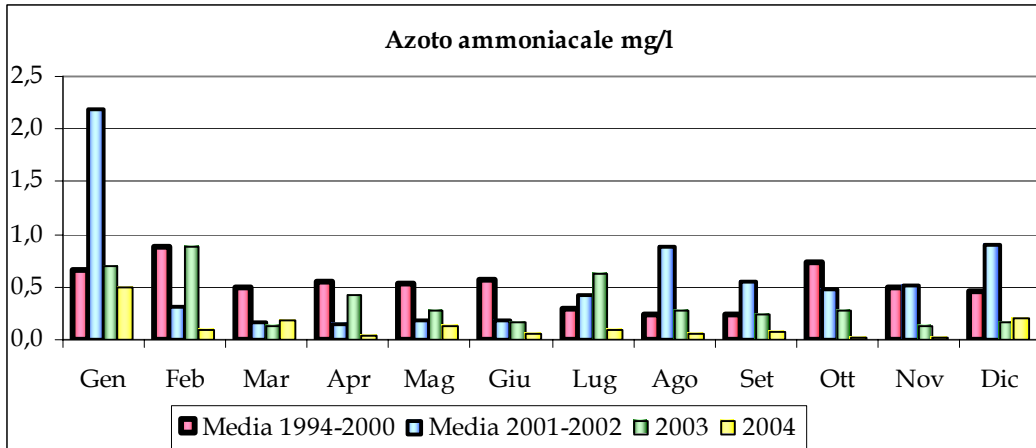
**Fiume Panaro**  
 Ponte di Bondeno - stazione 10



**Fiume Panaro**  
 Ponte di Bondeno - stazione 10

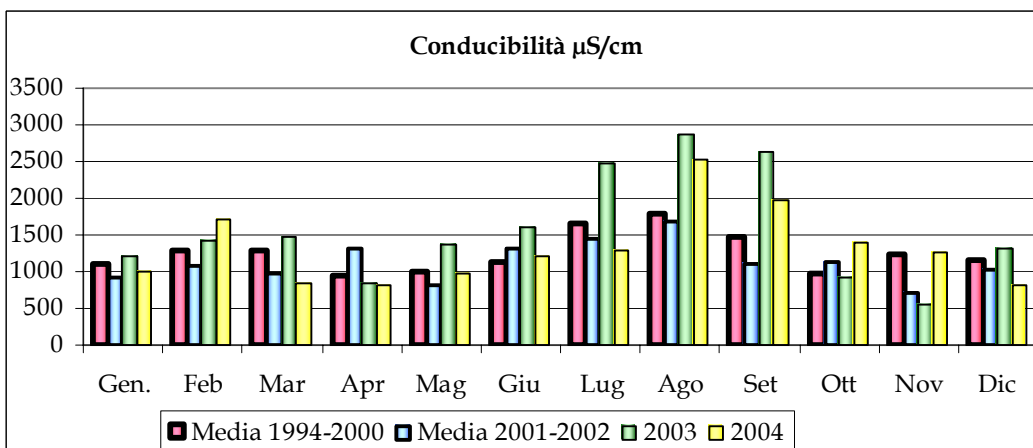
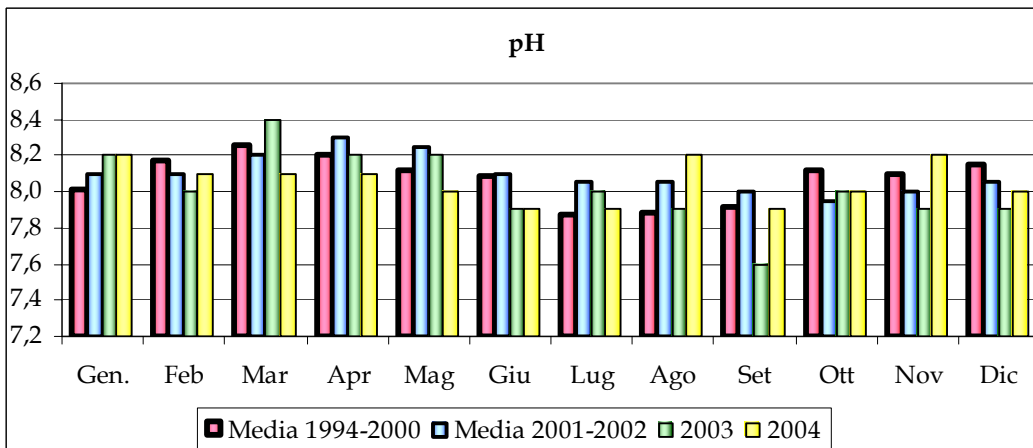
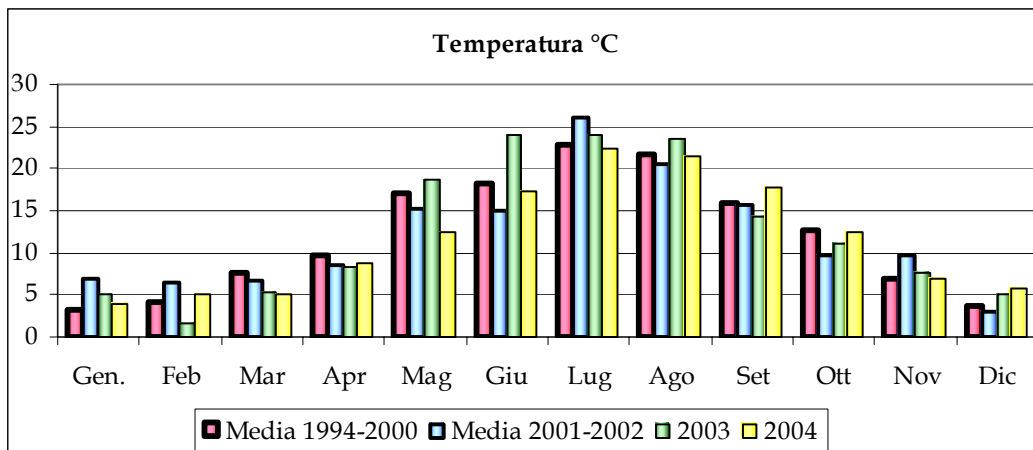


**Fiume Panaro**  
 Ponte di Bondeno - stazione 10

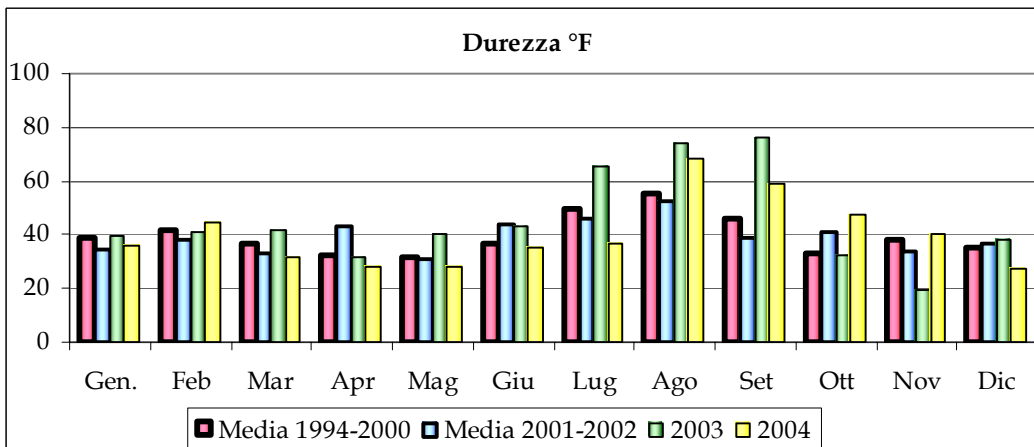
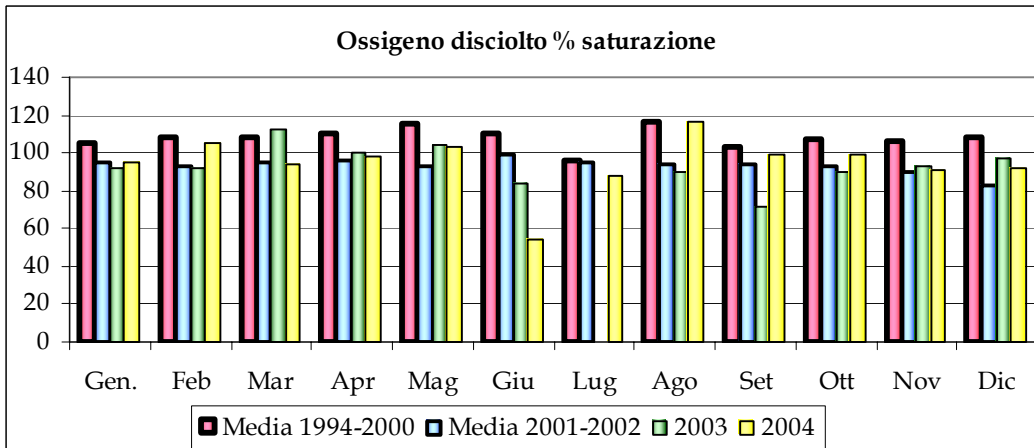
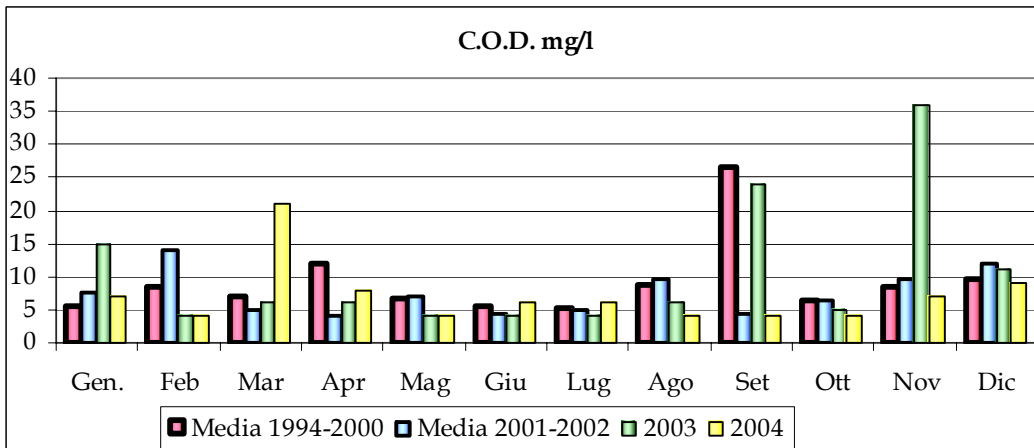
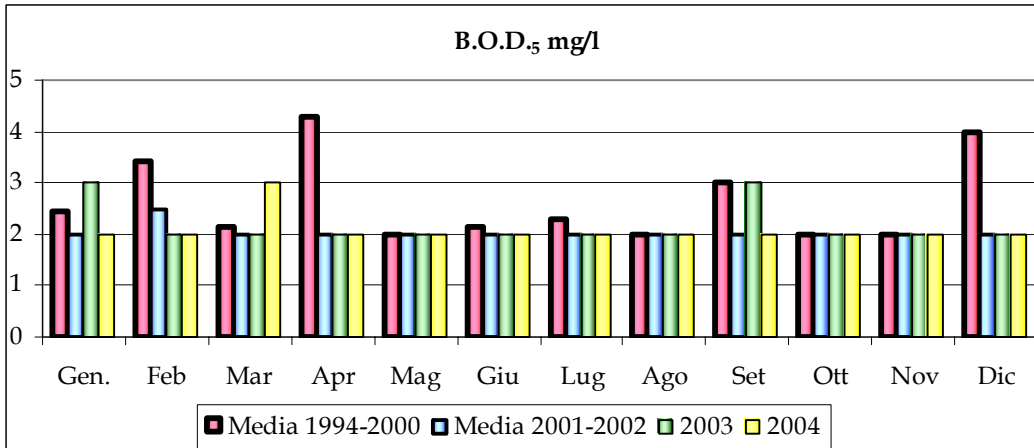


## Fiume Secchia

### Traversa di Castellarano - stazione 5



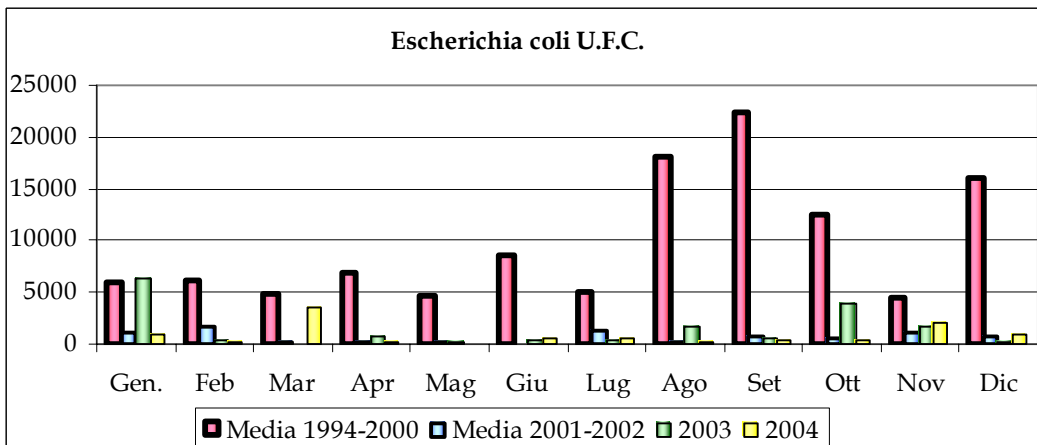
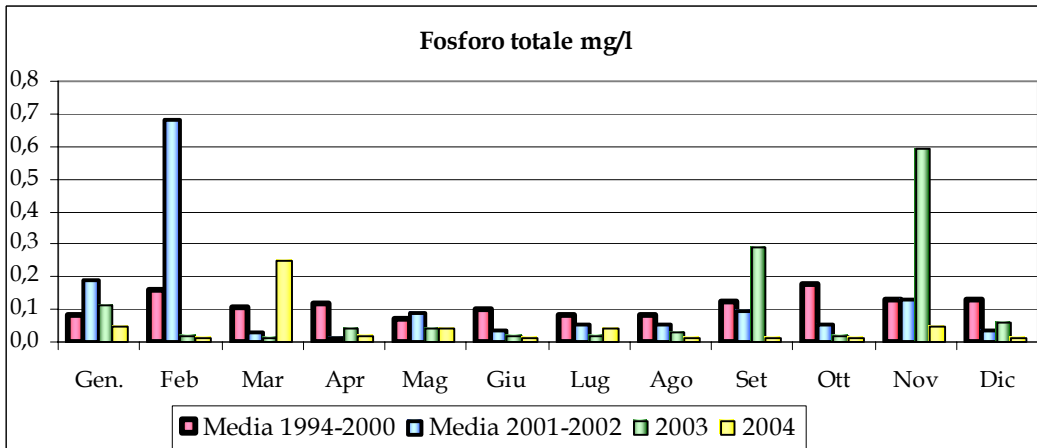
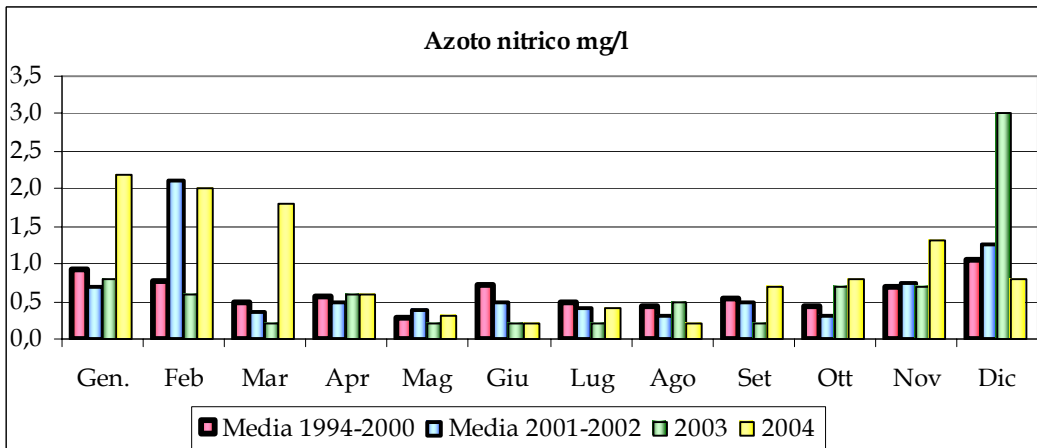
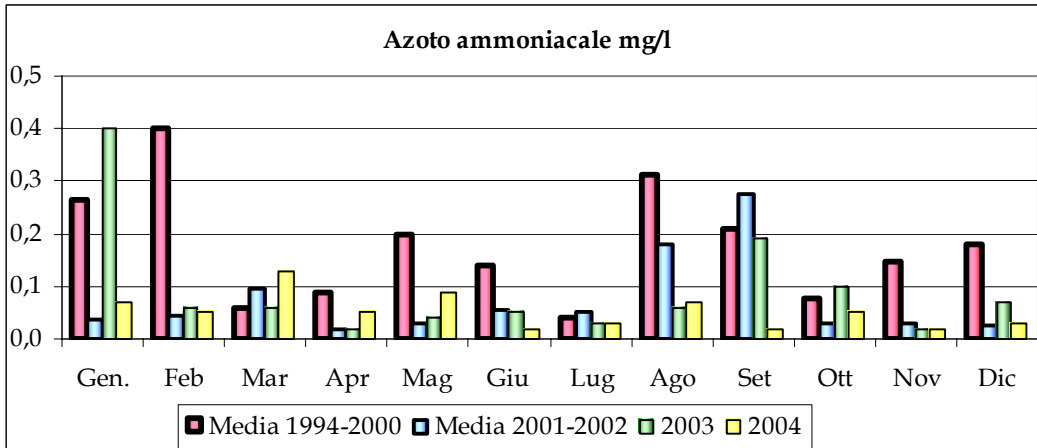
**Fiume Secchia**  
Traversa di Castellarano - stazione 5





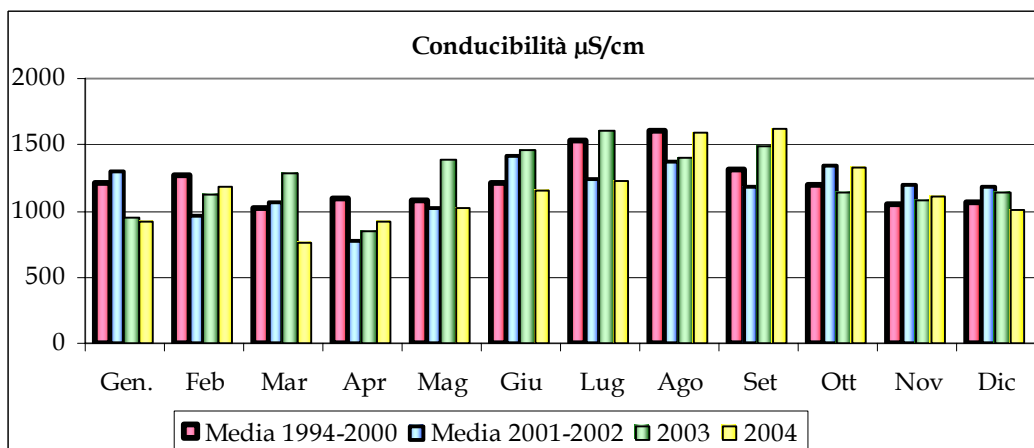
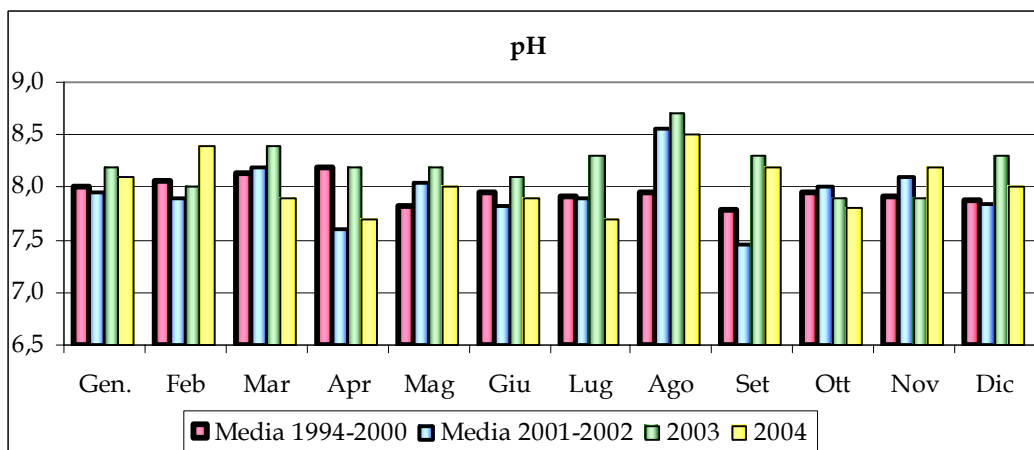
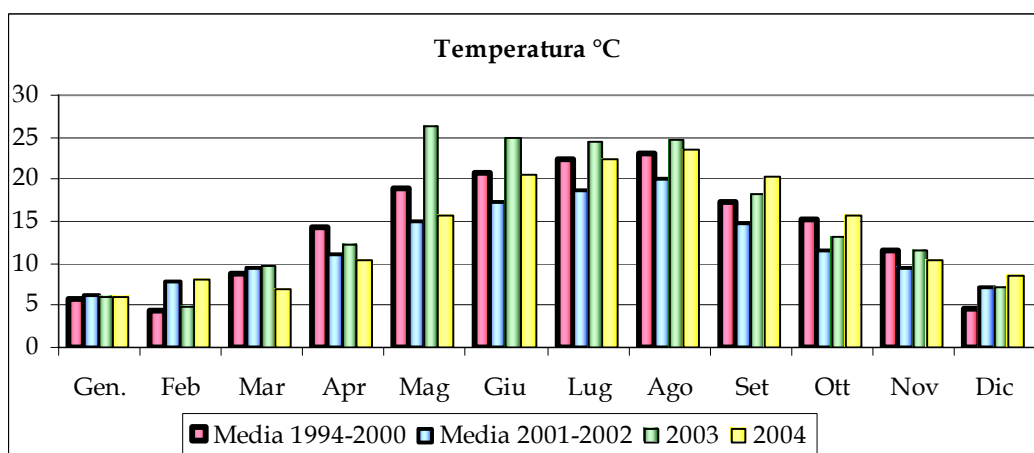
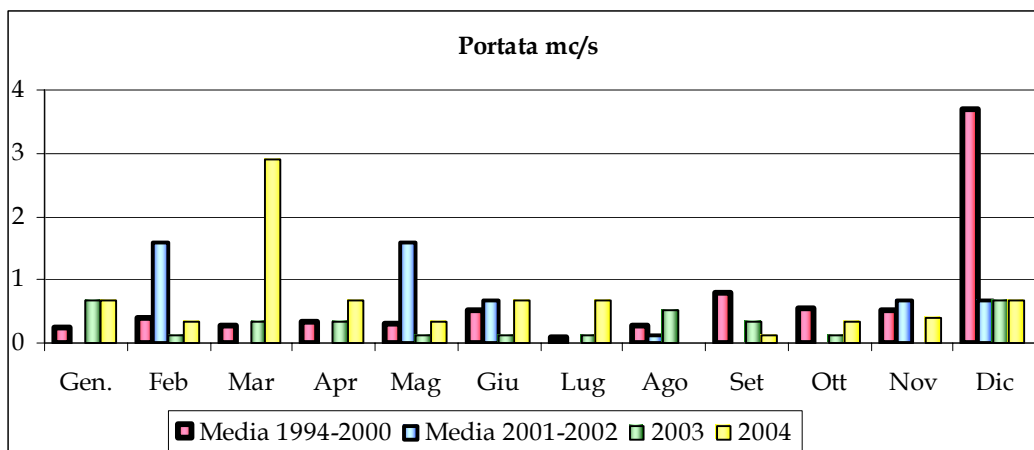
## Fiume Secchia

### Traversa di Castellarano - stazione 5



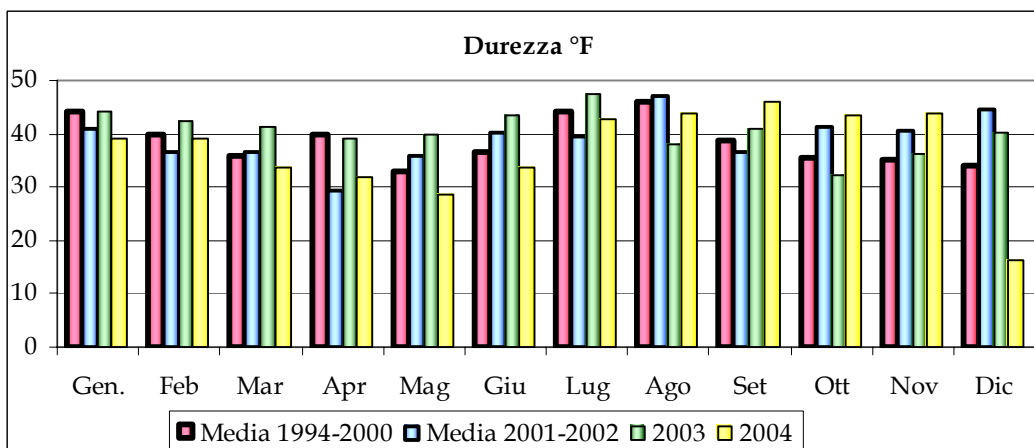
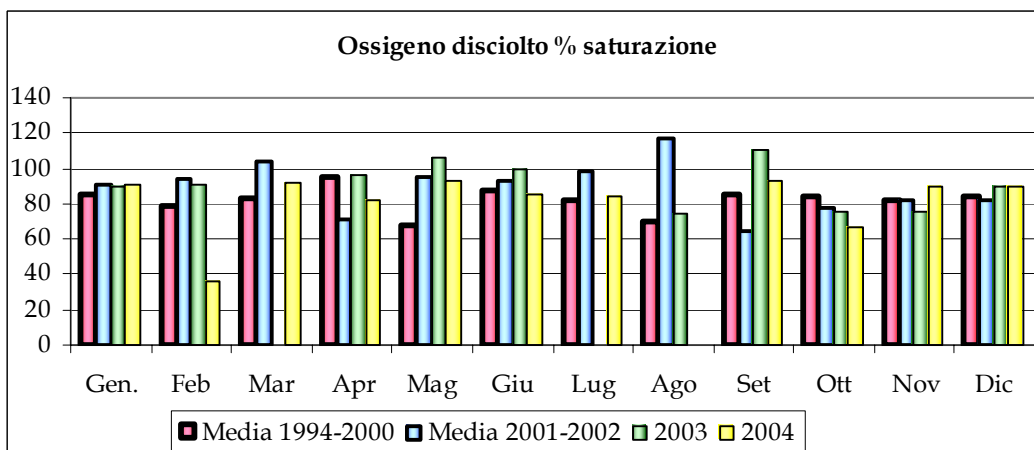
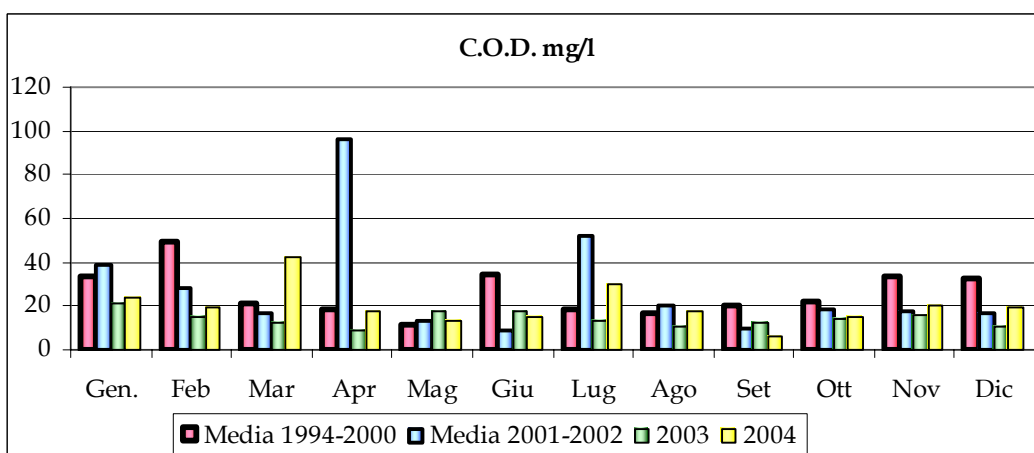
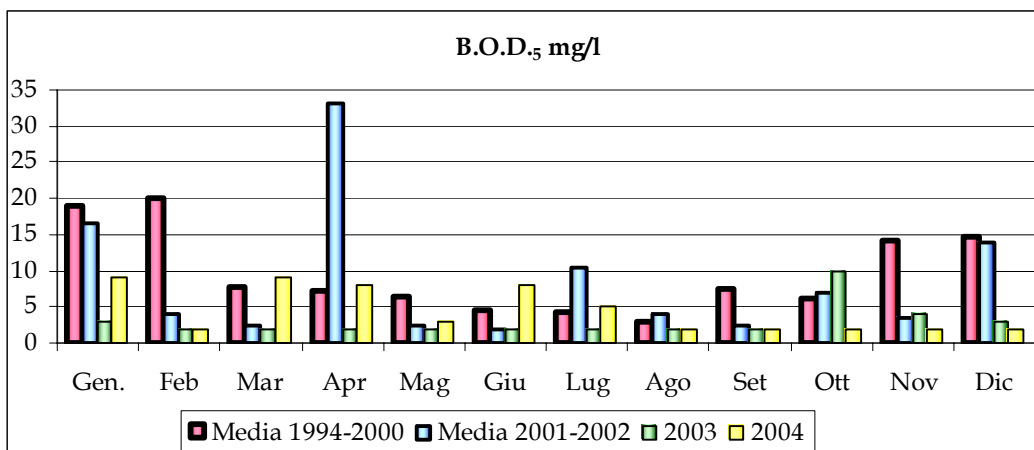
## Fiume Secchia

### Torrente Fossa di Spezzano – stazione 6



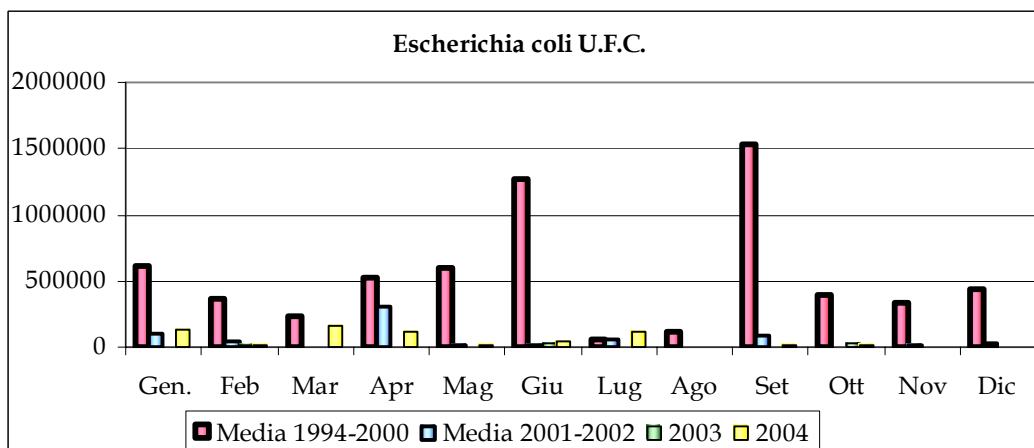
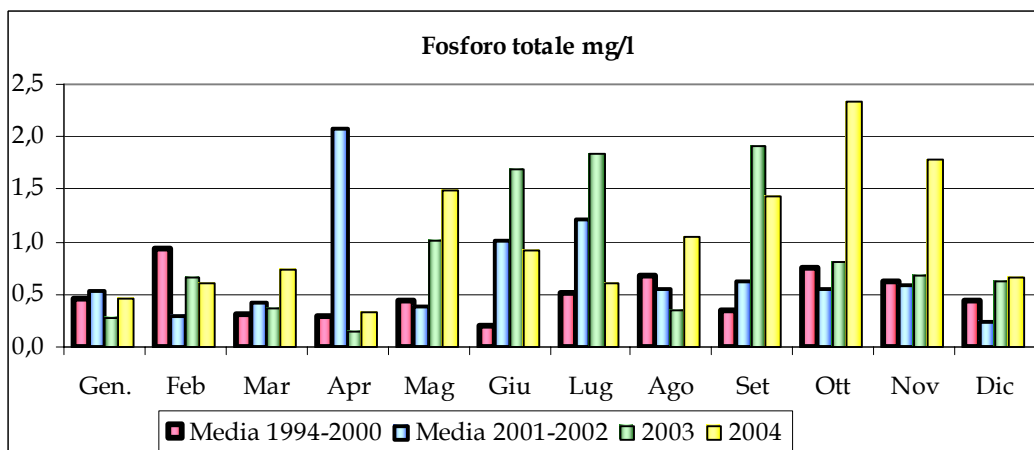
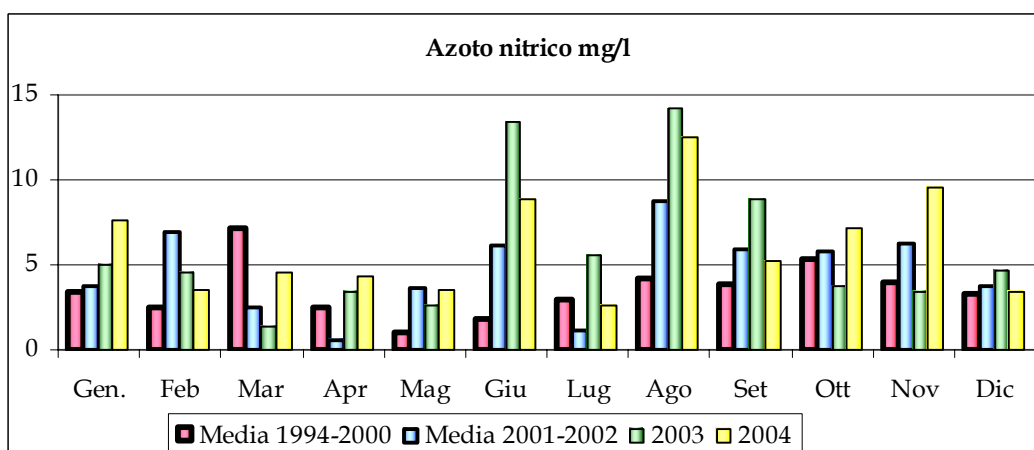
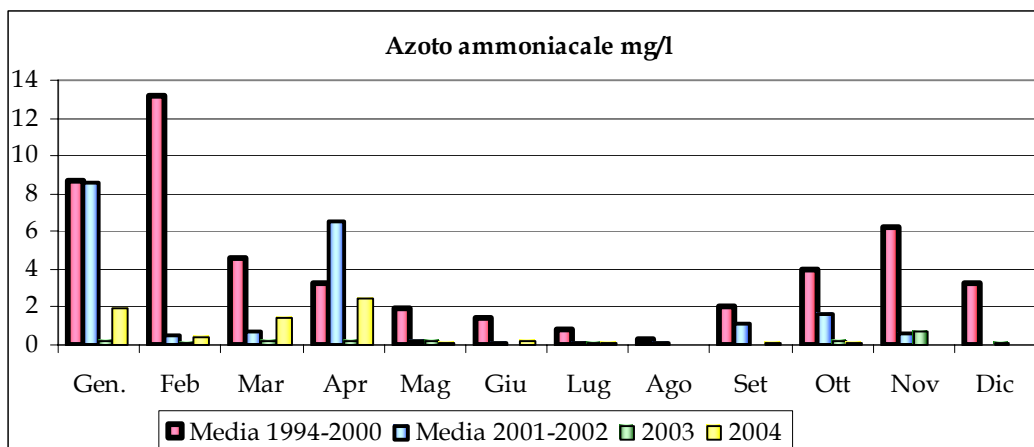
## Fiume Secchia

Torrente Fossa di Spezzano - stazione 6



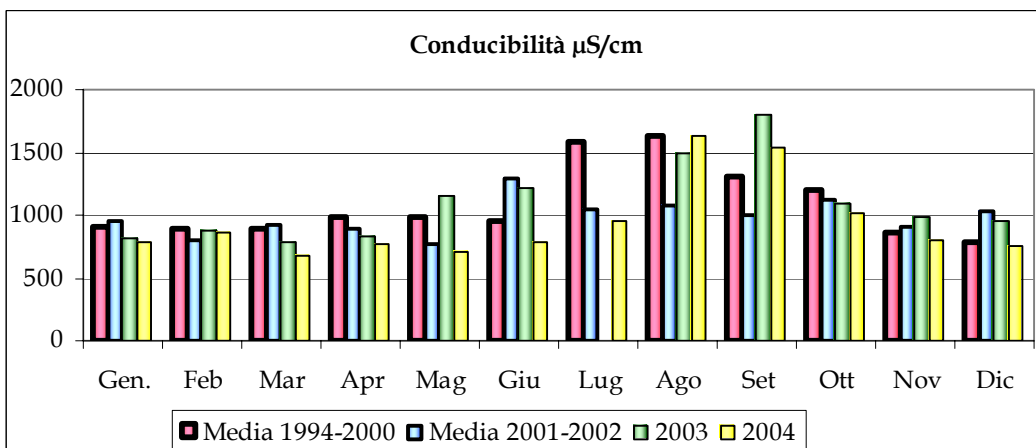
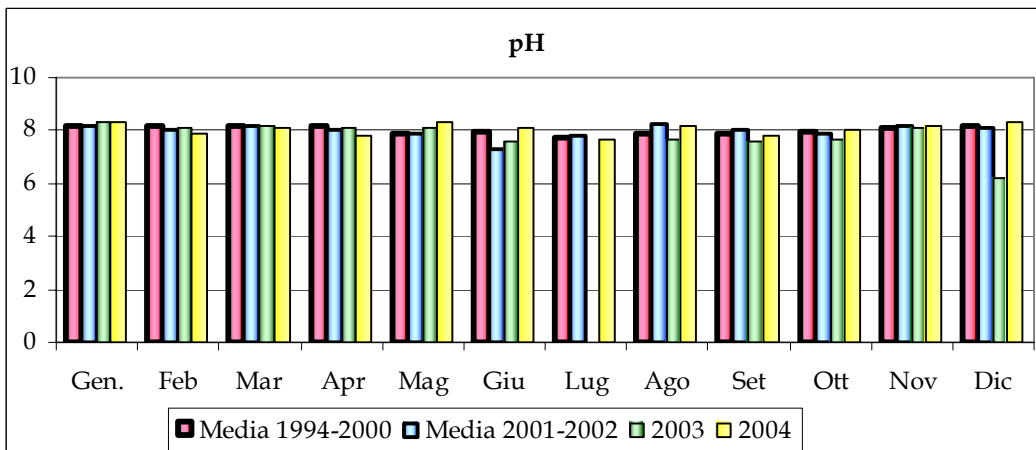
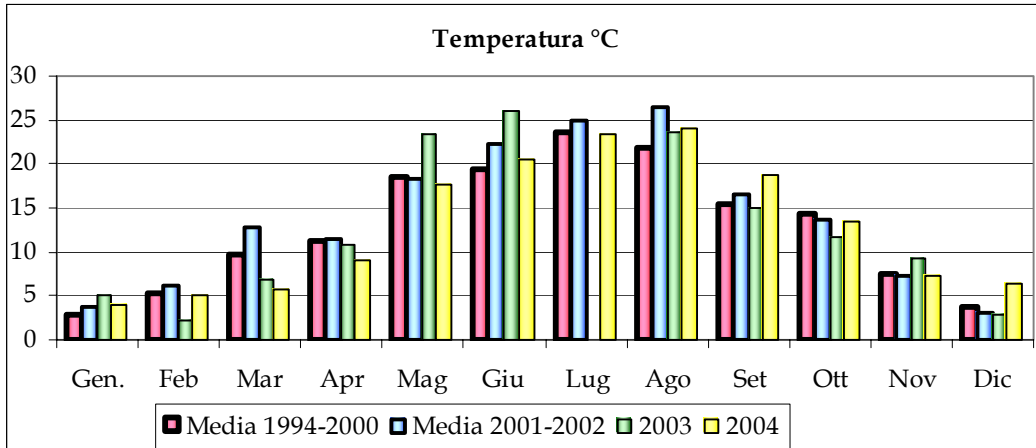
## Fiume Secchia

### Torrente Fossa di Spezzano – stazione 6

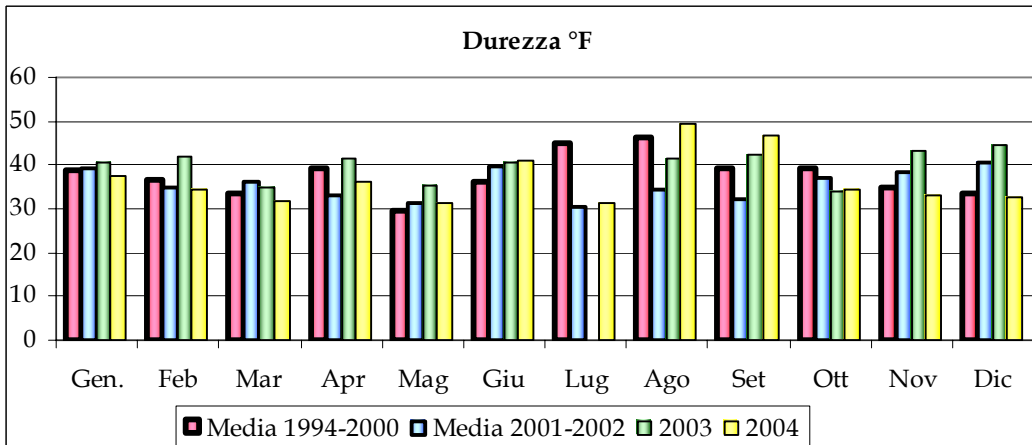
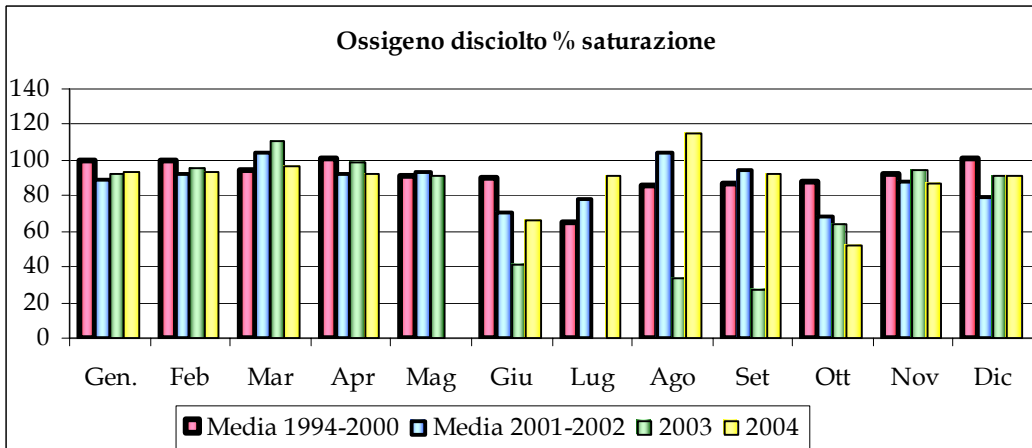
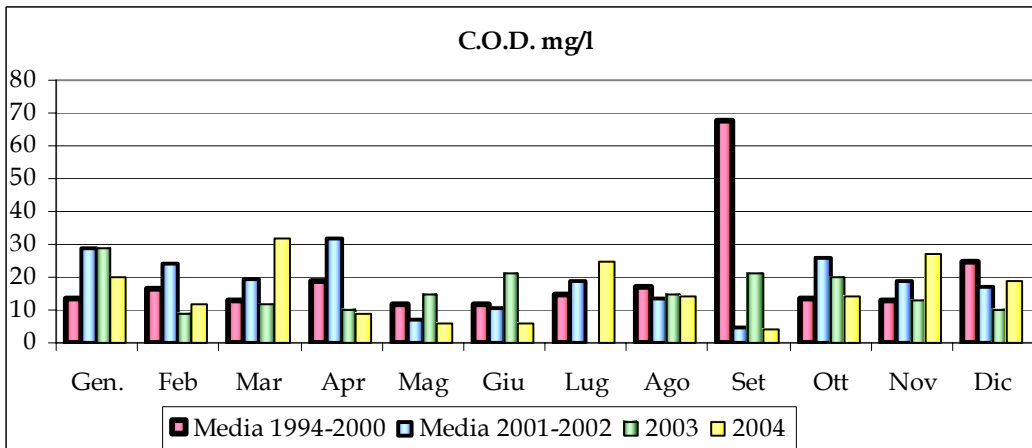
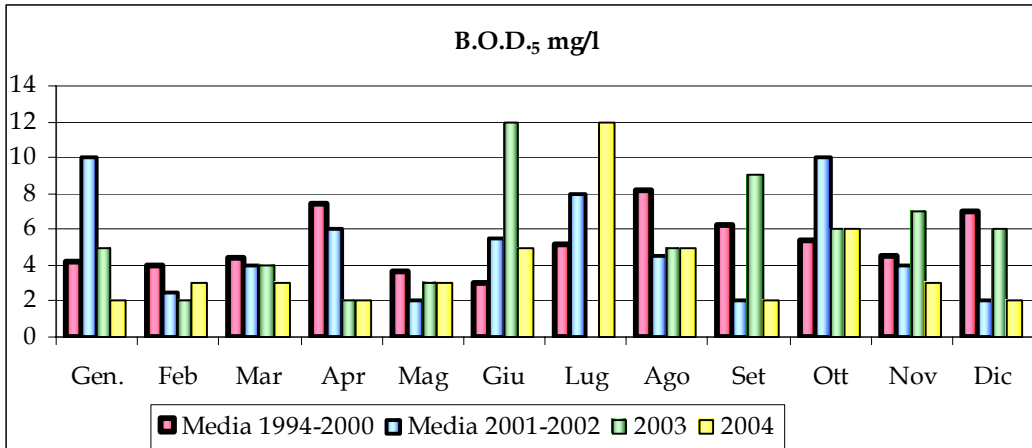


## Fiume Secchia

### Torrente Tresinaro - stazione 7

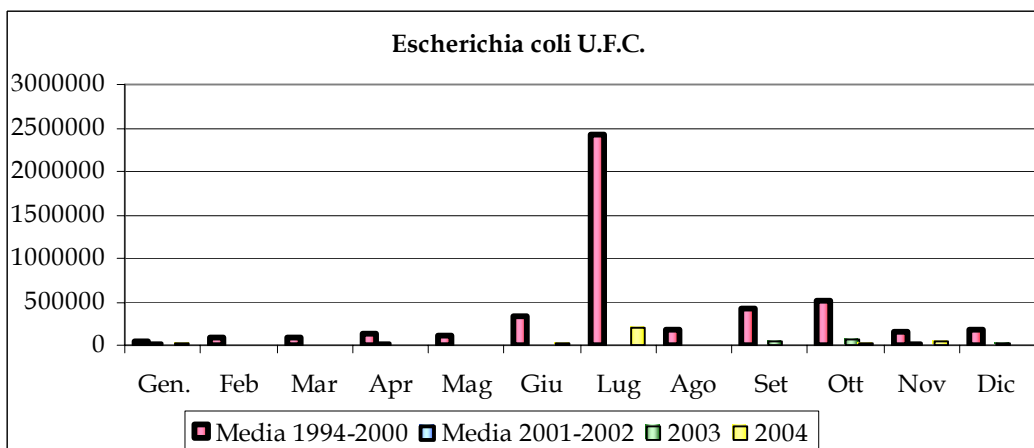
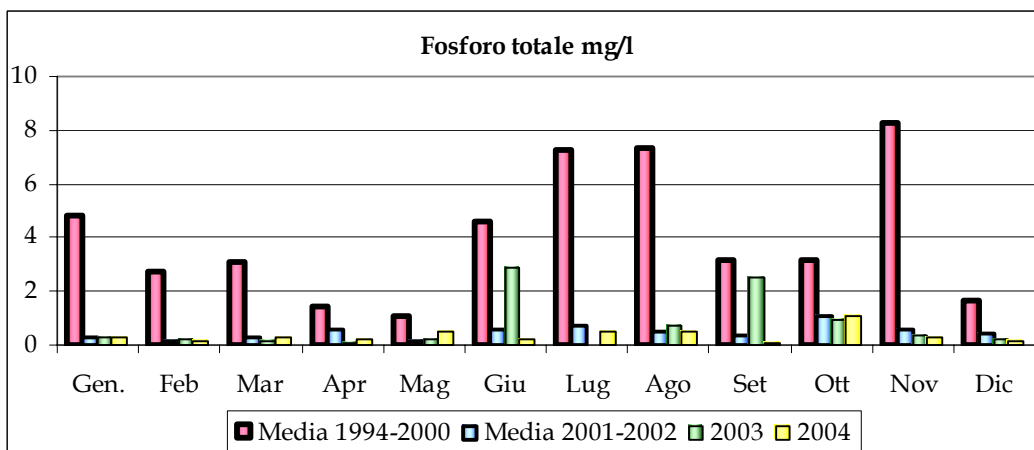
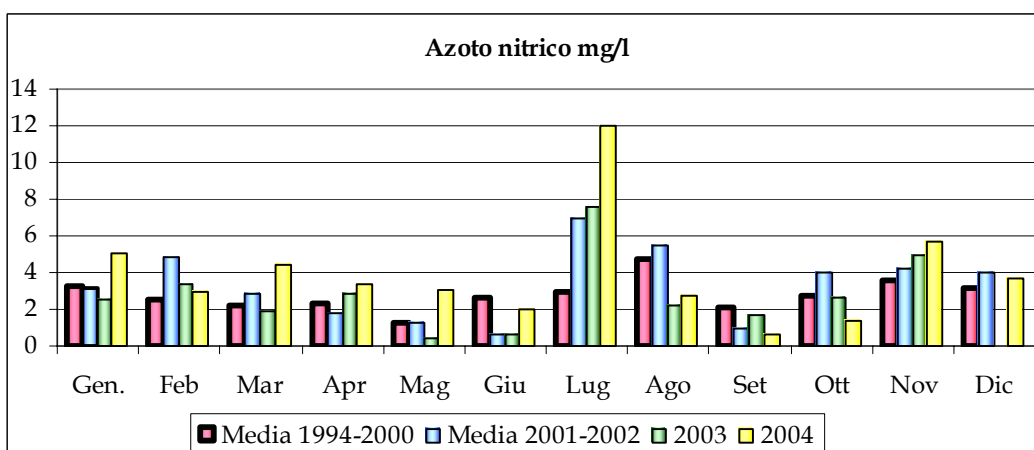
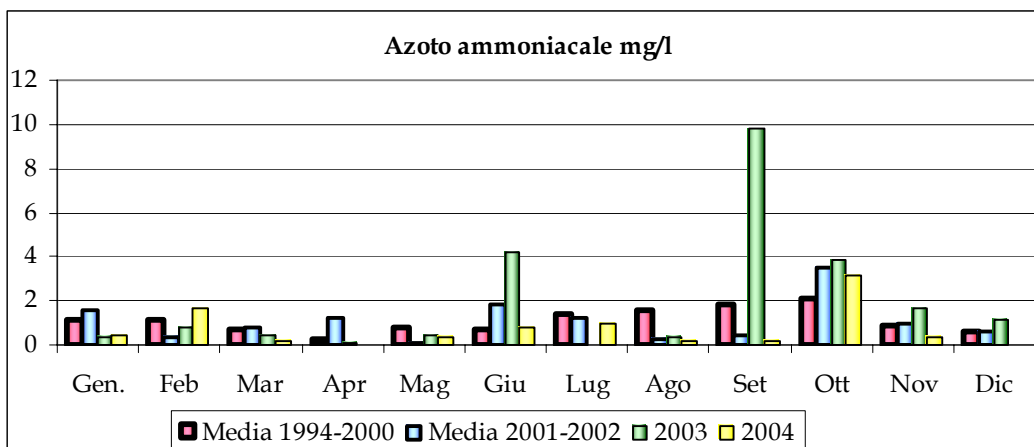


**Fiume Secchia**  
Torrente Tresinaro - stazione 7



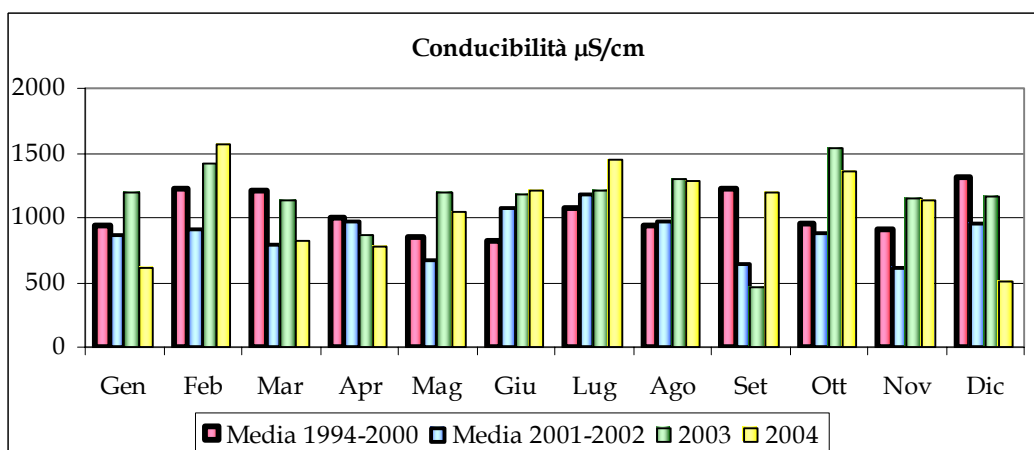
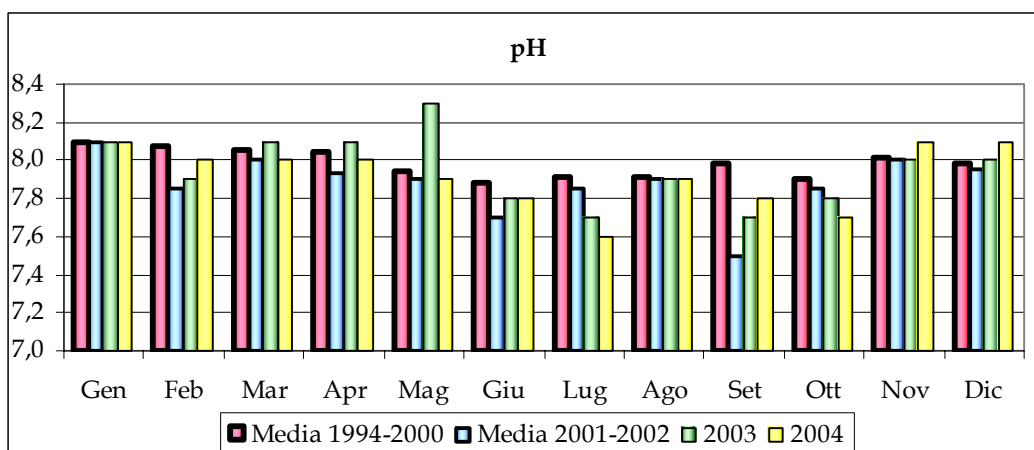
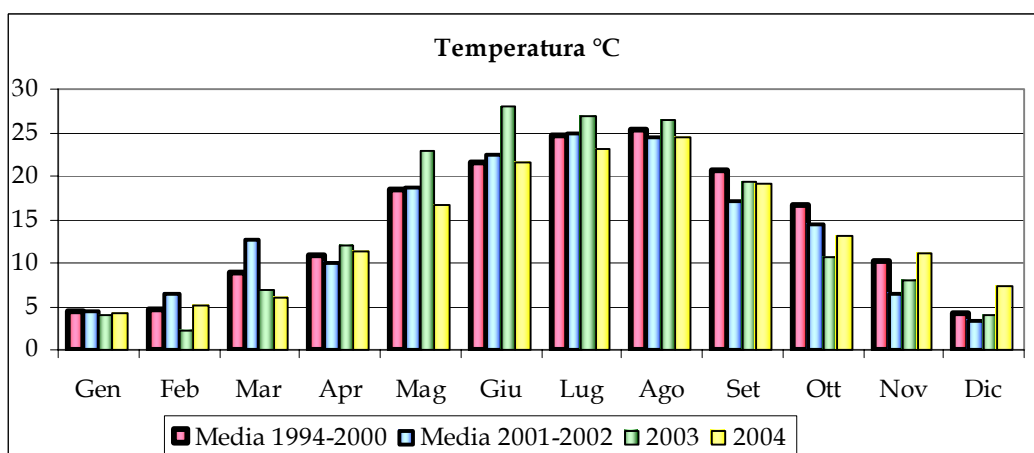
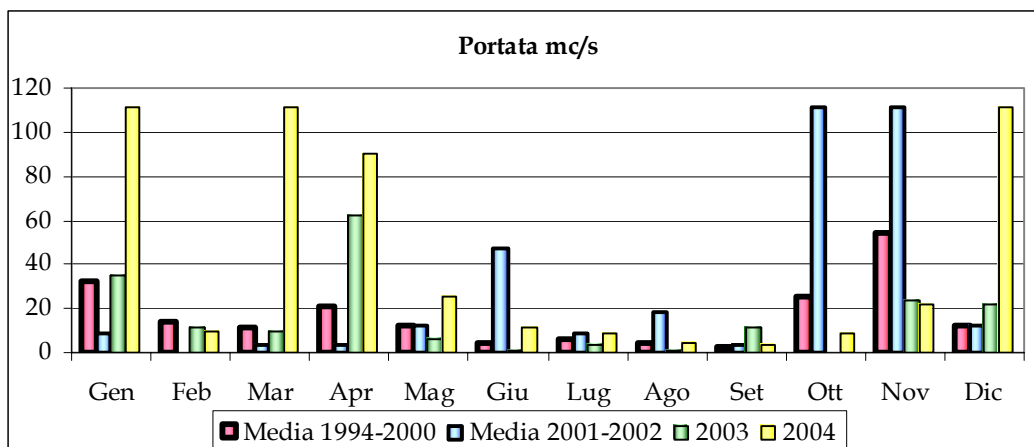
## Fiume Secchia

### Torrente Tresinaro - stazione 7



## Fiume Secchia

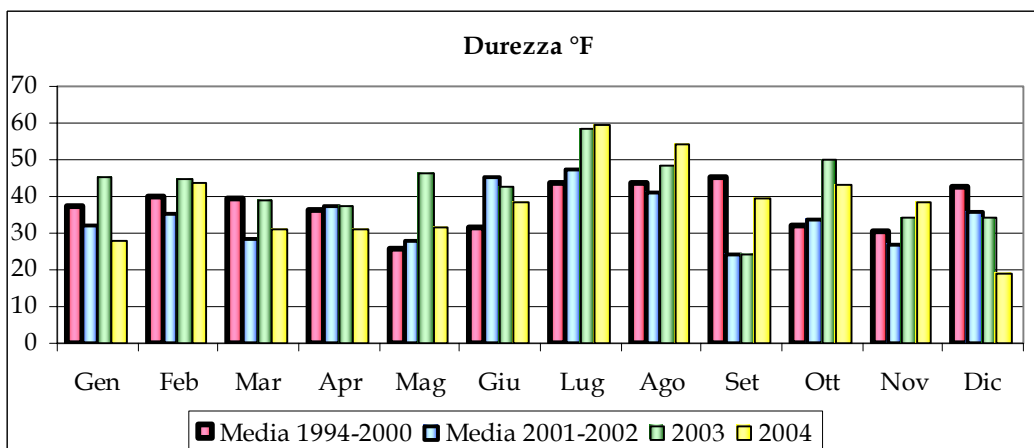
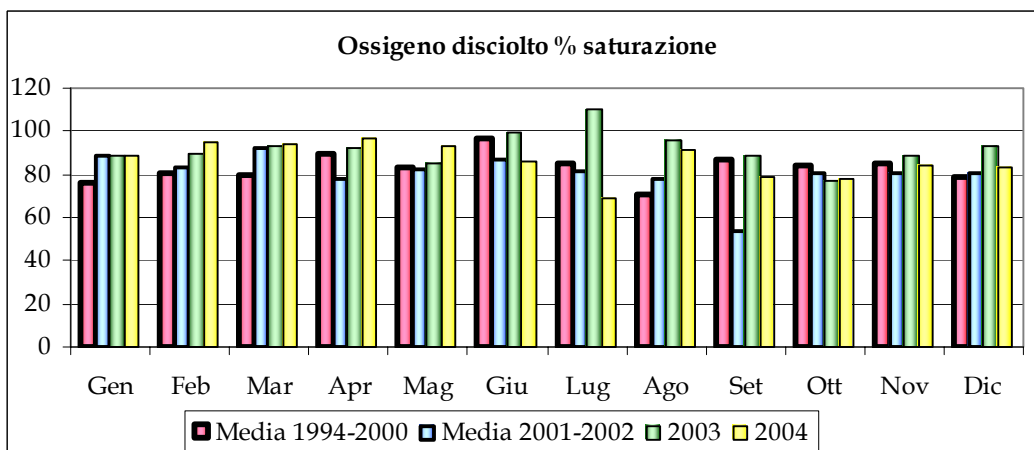
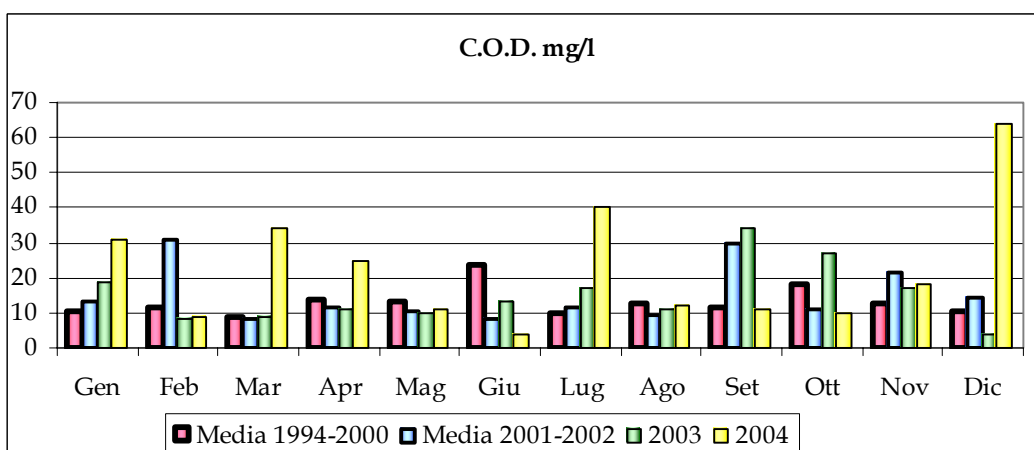
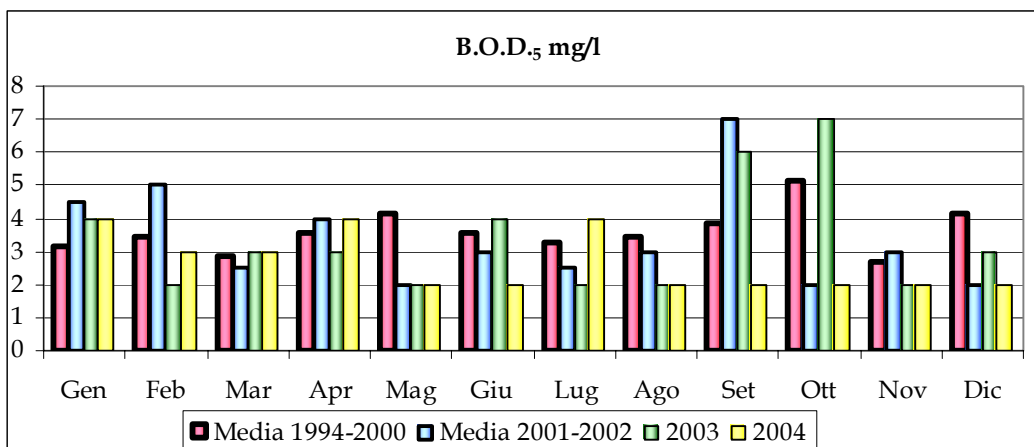
### Ponte di Bondanello - stazione 10





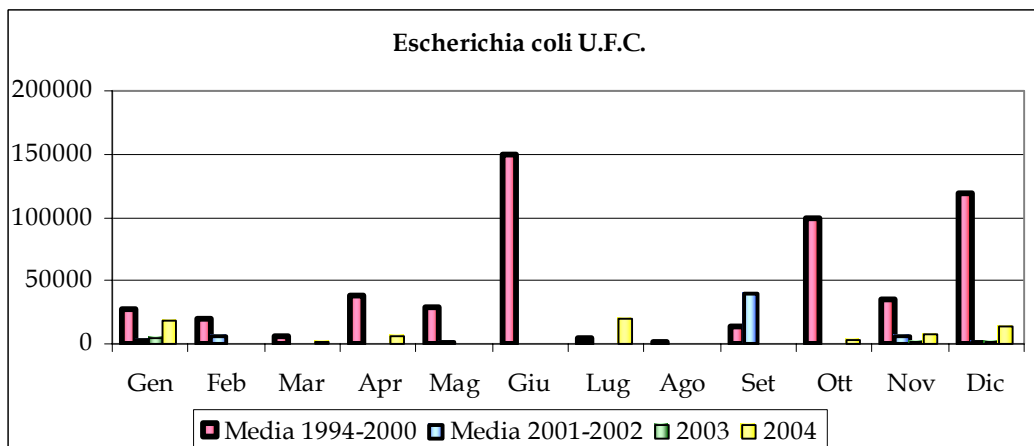
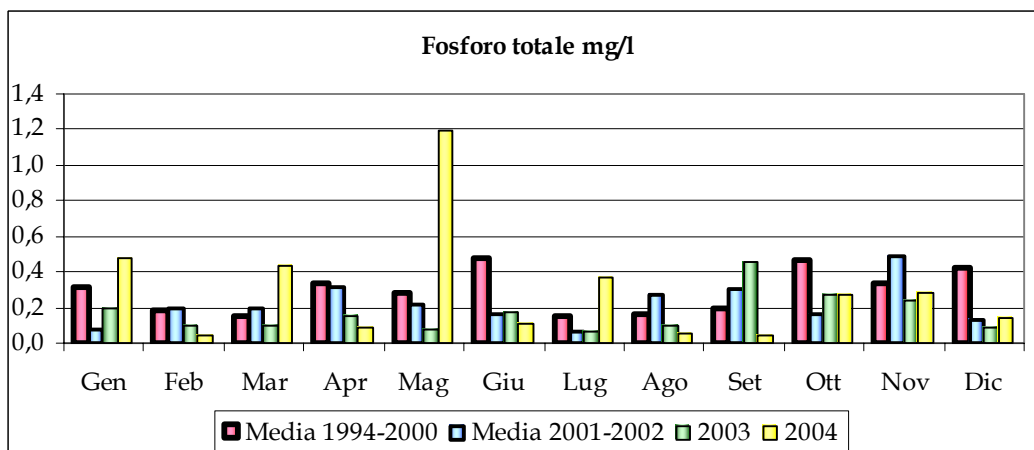
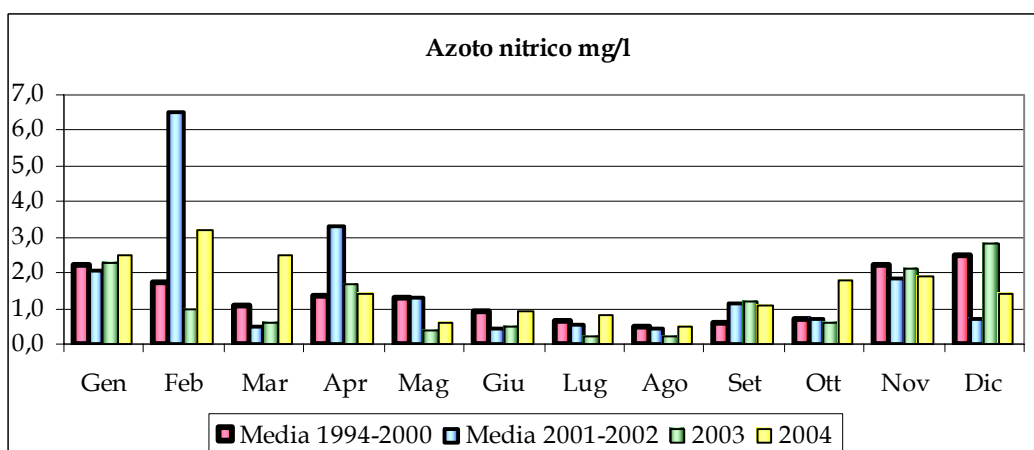
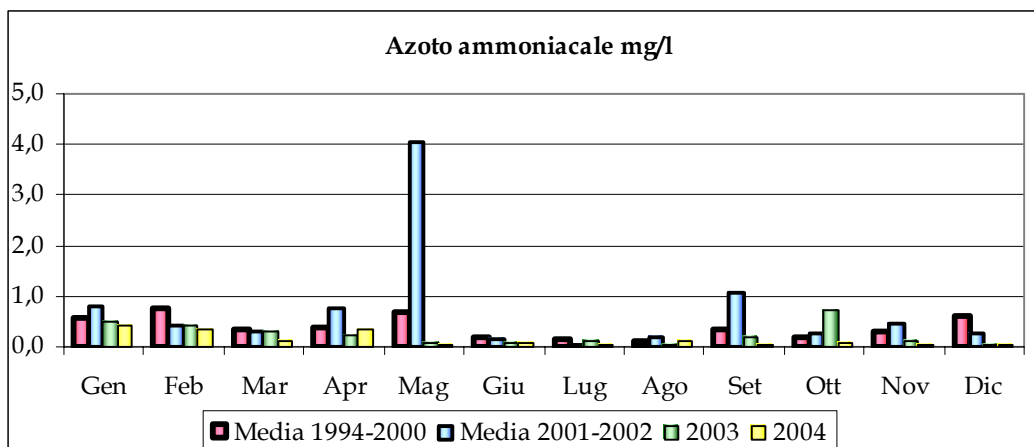
## Fiume Secchia

### Ponte di Bondanello - stazione 10



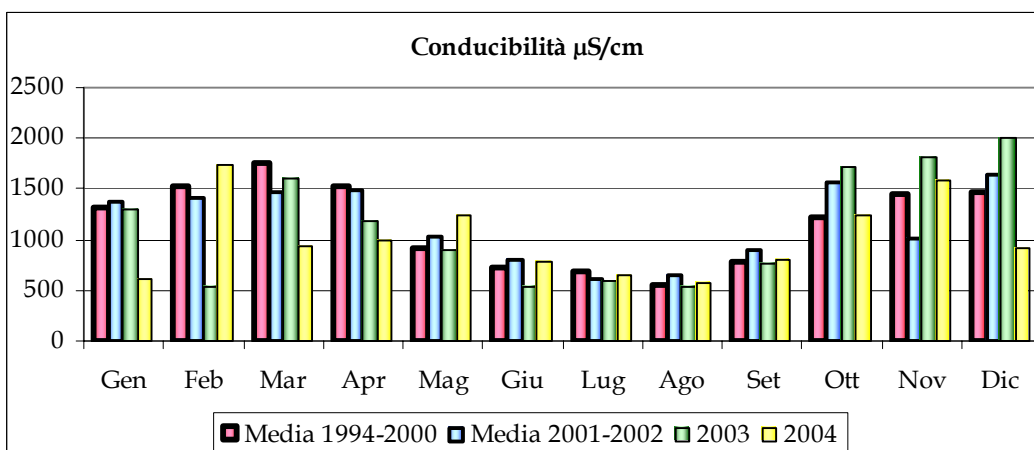
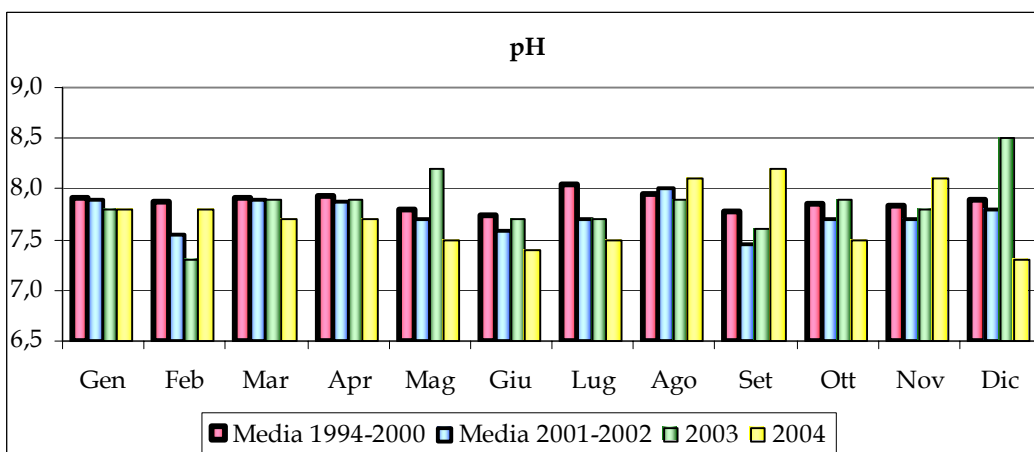
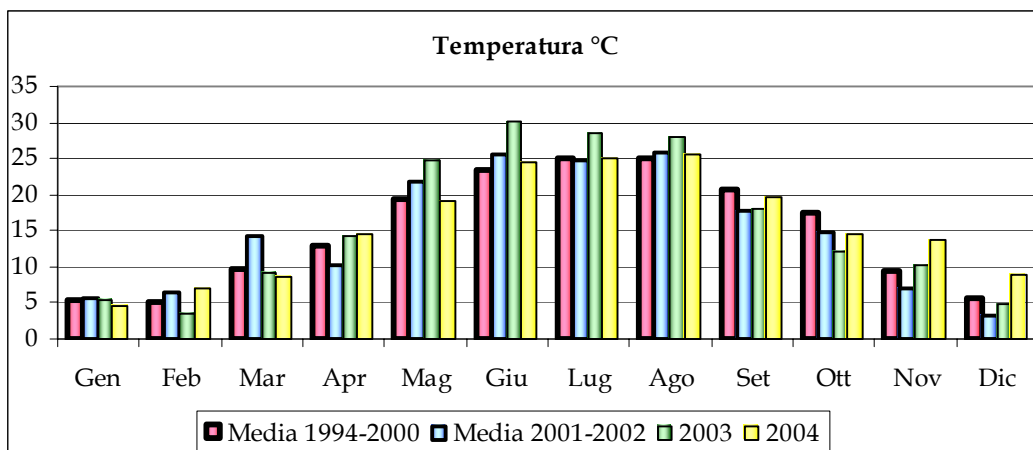
## Fiume Secchia

### Ponte di Bondanello - stazione 10



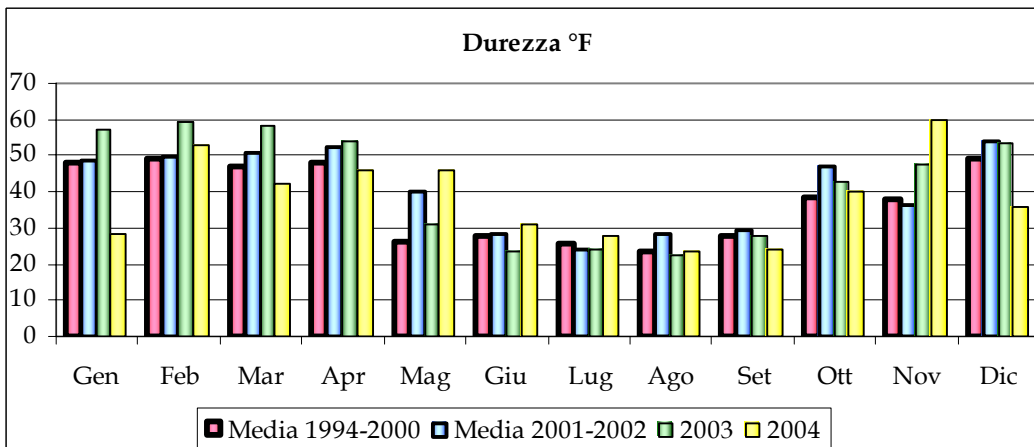
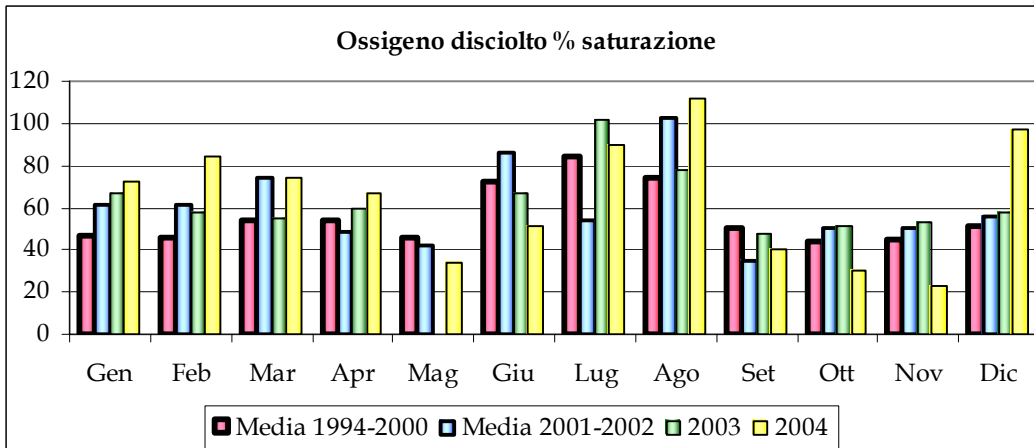
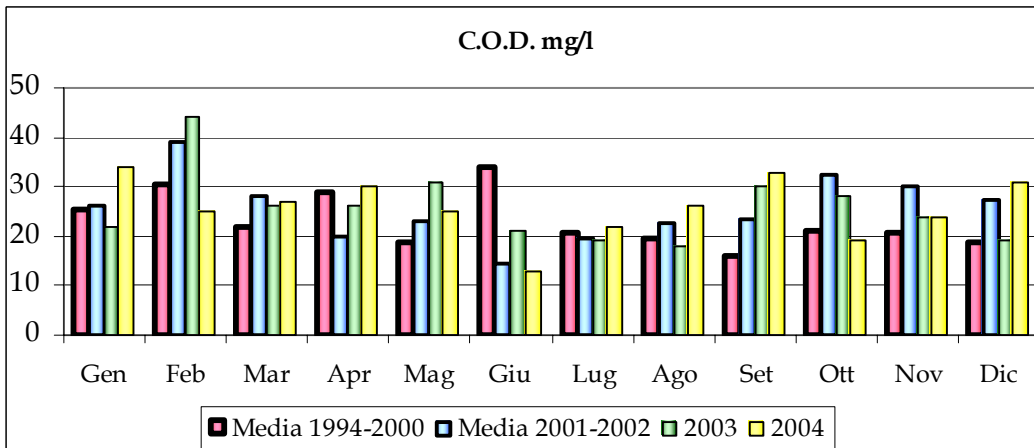
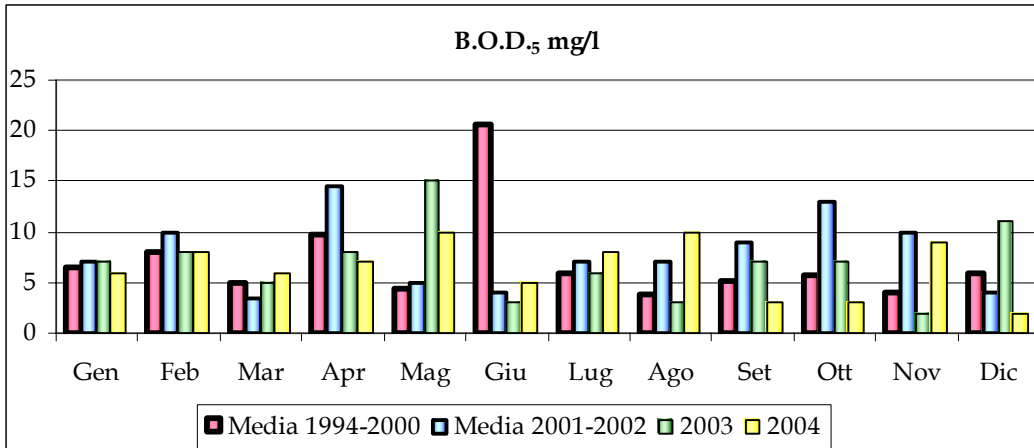
## Fiume Secchia

### Canale Emissario - stazione 11



## Fiume Secchia

### Canale Emissario - stazione 11



## Fiume Secchia

### Canale Emissario - stazione 11

